

LEA Name : Central Bucks SD
Address : 20 Welden Dr
Doylestown , PA 18901

County : Bucks
AUN Number : 122092102
LEA Type : SD

Annual Financial Report Accuracy Certification Statement

For Fiscal Year Ending
6/30/2019

Pennsylvania Department of Education
&
Office of Comptroller Operations

PDE-2056: Intermediate Unit
PDE-2057: School District, AVTS/CTC, Charter School,
and Special Program Jointure

CERTIFICATION: By signing this page I agree that the electronic data submitted is a complete and accurate statement of the financial operations and status of the local education agency for the fiscal year. It has been prepared in accordance with generally accepted accounting principles and established Commonwealth of PA reporting guidelines.



Chief School Administrator Signature

Date 10/31/19



Board Secretary Signature

Date 11/04/2019

Barbara Markowitz

Contact Person

(267)893-2077 Ext :

Contact Person Telephone Number

bmarkowitz@cbsd.org

Contact Person E-mail Address

(267)893-5800

Contact Person Fax Number

Audit Certification
Annual Financial Report:
For Fiscal Year Ending **6/30/2019**
(Pursuant to PA School Code Section 218(b))

LEA Name : Central Bucks SD
AUN Number : 122092102
County : Bucks

Audit Certification Due: 12/31/2019

This certification is applicable to the Annual Financial Report data submitted through the Consolidated Financial Reporting System on: 10/31/2019
Date

Auditing Firm: Dreslin & Company Inc
190 W Germantown Pike
Suite 150
East Norriton, PA 19401-1391

CERTIFICATION: By signing this page I agree that the financial statements of the school have been properly audited as noted above pursuant to Article XXIV, and in the auditor's professional opinion, the Annual Financial Report (PDE-2057) submitted on the date referenced is materially consistent with the audited financial statements.

Chief School Administrator

John J. Kapale
Signature

10/31/19
Date

Board Secretary

Stephanie Redetto
Signature

11/4/2019
Date

Barbara Markowitz

Contact Person

bmarkowitz@cbsd.org

Contact Person E-mail Address

(267)893-2077

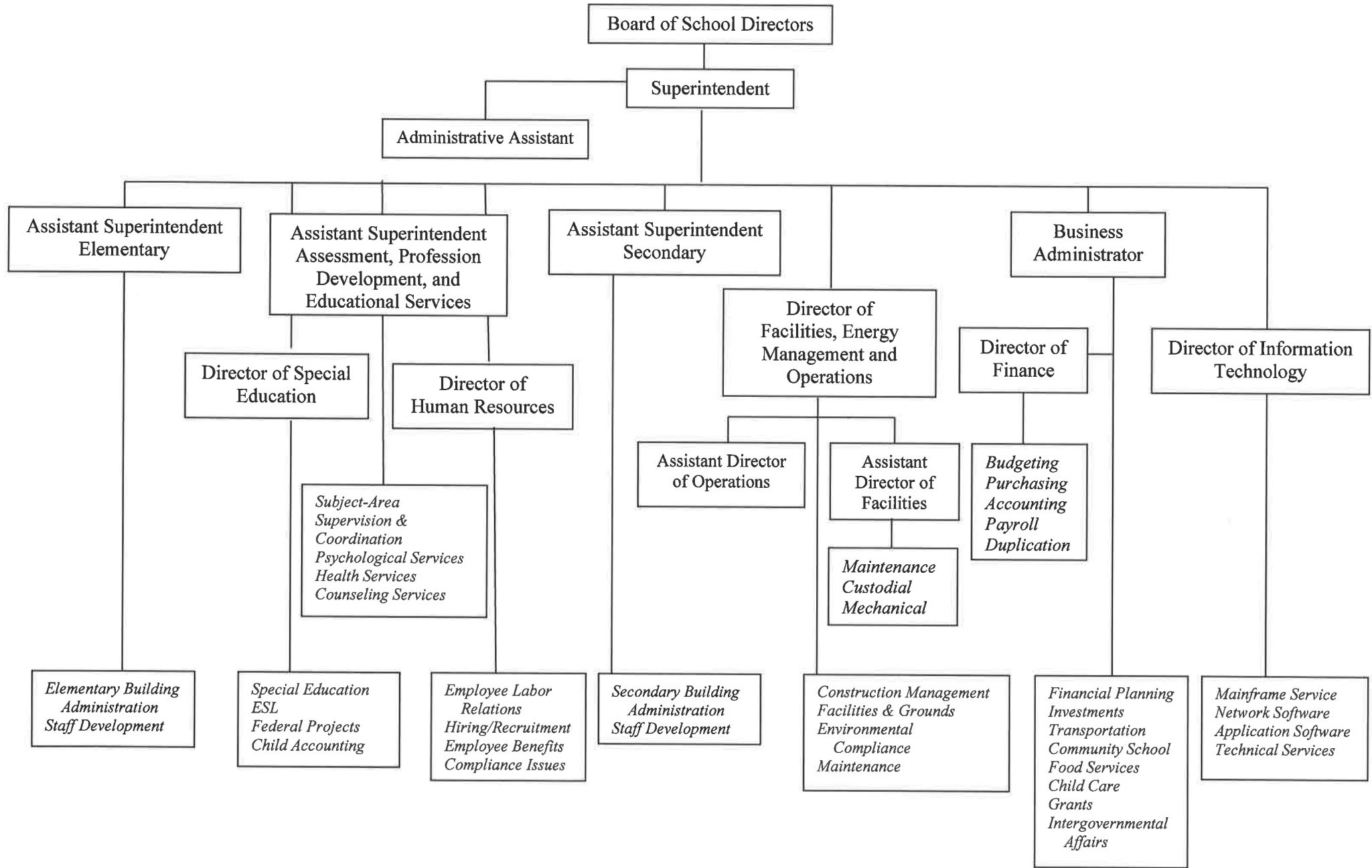
Ext :

Contact Person Telephone Number

(267)893-5800

Contact Person Fax Number

Central Bucks School District Organization Chart



Val Number

Description

Justification

50470

SESS - 2440 Nursing Services: SESS Schedule amounts for Special Education vary from prior year by 40% or more. Correct the data or enter a justification.

In 17-18 we were unaware that we should have included the Nurses Services expenses (2440) on the SESS schedule.

SESS Schedule 2440: \$1,465,904.14
Prior Year SESS Schedule 2440: \$0.00

Amounts Expressed in Whole Dollars	<u>General Fund</u> <u>(10)</u>	<u>Public Purpose Trust</u> <u>(27)</u>	<u>Other Compt Approved</u> <u>(28)</u>	<u>Athletic / Activity</u> <u>(29)</u>	<u>Capital Reserve (690.</u> <u>1850)</u> <u>(31)</u>
Assets And Deferred Outflows Of Resources					
Assets					
0100 Cash and Cash Equivalents	32,255,097				
0110 Investments	3,650,000				
0120 Taxes Receivable	7,507,705				
0130 Due From Other Funds	39,028				
0141 Due From Other Governments					
0142 State Revenue Receivable	14,325,261				
0143 Federal Revenue Receivable	978,037				
0145 Other Intergovernmental Revenue Receivable					
0146 Due from Primary Government					
0147 Due from Component Unit					
0150 Other Receivables	776,941				
0170 Inventories	47,979				
0180 Prepaid Expenses (Expenditures)	360,656				
0190 Other Current Assets					
Total Assets	\$59,940,704				
0910 Deferred Outflows of Resources					
Total Assets And Deferred Outflows Of Resources	\$59,940,704				

Amounts Expressed in Whole Dollars

	<u>Capital Reserve (1431)</u> <u>(32)</u>	<u>Other Capital Projects</u> <u>Fund</u> <u>(39)</u>	<u>Debt Service</u> <u>(40)</u>	<u>Permanent</u> <u>(90)</u>	<u>Total Governmental</u> <u>Funds</u>
Assets And Deferred Outflows Of Resources					
Assets					
0100 Cash and Cash Equivalents		10,005,866	30,170,952		72,431,915
0110 Investments		43,920,000			47,570,000
0120 Taxes Receivable					7,507,705
0130 Due From Other Funds					39,028
0141 Due From Other Governments					
0142 State Revenue Receivable					14,325,261
0143 Federal Revenue Receivable					978,037
0145 Other Intergovernmental Revenue Receivable					
0146 Due from Primary Government					
0147 Due from Component Unit					
0150 Other Receivables					776,941
0170 Inventories					47,979
0180 Prepaid Expenses (Expenditures)					360,656
0190 Other Current Assets					
Total Assets		\$53,925,866	\$30,170,952		\$144,037,522
0910 Deferred Outflows of Resources					
Total Assets And Deferred Outflows Of Resources		\$53,925,866	\$30,170,952		\$144,037,522

Amounts Expressed in Whole Dollars

<u>General Fund</u>	<u>Public Purpose Trust</u>	<u>Other Compt Approved</u>	<u>Athletic / Activity</u>	<u>Capital Reserve (690.</u>
<u>(10)</u>	<u>(27)</u>	<u>(28)</u>	<u>(29)</u>	<u>1850)</u>
				<u>(31)</u>

Liabilities And Deferred Inflows Of Resources And Fund Balances

Liabilities

0400 Due to Other Funds	
0411 Due to Other Governments	
0412 Due to Primary Government	
0413 Due to Component Unit	
0420 Accounts Payable	3,750,915
0430 Contracts Payable	
0440 Current Portion of Long-Term Debt	
0450 Short-Term Payables	
0461 Accrued Salaries and Benefits	1,378,045
0462 Payroll Deductions and Withholding	26,011,146
0480 Unearned Revenues	191,018
0490 Other Current Liabilities	

Total Liabilities	\$31,331,124
--------------------------	---------------------

0950 Deferred Inflows of Resources	1,896,557
------------------------------------	-----------

Fund Balances

0810 Nonspendable Fund Balance	408,635
0820 Restricted Fund Balance	
0830 Committed Fund Balance	
0840 Assigned Fund Balance	10,795,262
0850 Unassigned Fund Balance	15,509,126

Total Fund Balances	\$26,713,023
----------------------------	---------------------

Total Liabilities, Deferred Inflows Of Resources And Fund Balances	\$59,940,704
---	---------------------

Amounts Expressed in Whole Dollars	<u>Capital Reserve (1431)</u> <u>(32)</u>	<u>Other Capital Projects</u> <u>Fund</u> <u>(39)</u>	<u>Debt Service</u> <u>(40)</u>	<u>Permanent</u> <u>(90)</u>	<u>Total Governmental</u> <u>Funds</u>
Liabilities And Deferred Inflows Of Resources And Fund Balances					
Liabilities					
0400 Due to Other Funds		24,172			24,172
0411 Due to Other Governments					
0412 Due to Primary Government					
0413 Due to Component Unit					
0420 Accounts Payable		636,498			4,387,413
0430 Contracts Payable					
0440 Current Portion of Long-Term Debt					
0450 Short-Term Payables					
0461 Accrued Salaries and Benefits					1,378,045
0462 Payroll Deductions and Withholding					26,011,146
0480 Unearned Revenues					191,018
0490 Other Current Liabilities					
Total Liabilities		\$660,670			\$31,991,794
0950 Deferred Inflows of Resources					1,896,557
Fund Balances					
0810 Nonspendable Fund Balance					408,635
0820 Restricted Fund Balance					
0830 Committed Fund Balance		53,265,196			53,265,196
0840 Assigned Fund Balance			30,170,952		40,966,214
0850 Unassigned Fund Balance					15,509,126
Total Fund Balances		\$53,265,196	\$30,170,952		\$110,149,171
Total Liabilities, Deferred Inflows Of Resources And Fund Balances		\$53,925,866	\$30,170,952		\$144,037,522

Amounts Expressed in Whole Dollars	<u>General Fund</u> <u>(10)</u>	<u>Public Purpose Trust</u> <u>(27)</u>	<u>Other Compt Approved</u> <u>(28)</u>	<u>Athletic / Activity</u> <u>(29)</u>	<u>Capital Reserve (690.</u> <u>1850)</u> <u>(31)</u>
Revenues					
6000 Revenue from Local Sources	264,271,029				
7000 Revenue from State Sources	70,128,862				
8000 Revenue from Federal Sources	1,992,289				
Total Revenues	\$336,392,180				
Expenditures					
1000 Instruction	197,918,946				
2000 Support Services	96,786,067				
3000 Operation of Non-Instructional Services	8,563,154				
4000 Facilities Acquisition, Construction and Improvement Services					
5110 Debt Service	13,024,444				
5130 Refund of Prior Year Revenues / Receipts	3,400				
Total Expenditures	\$316,296,011				
Excess (Deficiency) Of Revenues Over Expenditures	\$20,096,169				
Other Financing Sources (Uses)					
9110 Face Value of Bonds Issued					
9120 Proceeds from Refunding of Bonds					
9130 Bond Premiums					
9200 Proceeds from Extended-Term Financing					
9300 Interfund Transfers - IN					
9400 Sale of or Compensation for Loss of Fixed Assets	1,800				
9710 Transfers from Component Units					
9720 Transfers from Primary Governments					
9910 Other Financing Sources Not Listed in the 9000 Series					
9990 Insurance Recoveries					
5120 Debt Service – Refunded Bonds					
5150 Bond Discounts					
5200 Interfund Transfers – Out	39,685,180				
5300 Transfers Out to Component Units/Primary Governments					
Total Other Financing Sources (Uses)	(\$39,683,380)				

Amounts Expressed in Whole Dollars	<u>Capital Reserve (1431)</u> <u>(32)</u>	<u>Other Capital Projects</u> <u>Fund</u> <u>(39)</u>	<u>Debt Service</u> <u>(40)</u>	<u>Permanent</u> <u>(90)</u>	<u>Total Governmental</u> <u>Funds</u>
Revenues					
6000 Revenue from Local Sources		1,107,932	544,796		265,923,757
7000 Revenue from State Sources					70,128,862
8000 Revenue from Federal Sources					1,992,289
Total Revenues		\$1,107,932	\$544,796		\$338,044,908
Expenditures					
1000 Instruction					197,918,946
2000 Support Services					96,786,067
3000 Operation of Non-Instructional Services					8,563,154
4000 Facilities Acquisition, Construction and Improvement Services		16,784,697			16,784,697
5110 Debt Service					13,024,444
5130 Refund of Prior Year Revenues / Receipts					3,400
Total Expenditures		\$16,784,697			\$333,080,708
Excess (Deficiency) Of Revenues Over Expenditures		(\$15,676,765)	\$544,796		\$4,964,200
Other Financing Sources (Uses)					
9110 Face Value of Bonds Issued					
9120 Proceeds from Refunding of Bonds					
9130 Bond Premiums					
9200 Proceeds from Extended-Term Financing					
9300 Interfund Transfers - IN		29,996,119	9,689,061		39,685,180
9400 Sale of or Compensation for Loss of Fixed Assets					1,800
9710 Transfers from Component Units					
9720 Transfers from Primary Governments					
9910 Other Financing Sources Not Listed in the 9000 Series					
9990 Insurance Recoveries					
5120 Debt Service – Refunded Bonds					
5150 Bond Discounts					
5200 Interfund Transfers – Out					39,685,180
5300 Transfers Out to Component Units/Primary Governments					
Total Other Financing Sources (Uses)		\$29,996,119	\$9,689,061		\$1,800

Amounts Expressed in Whole Dollars	<u>General Fund</u> <u>(10)</u>	<u>Public Purpose Trust</u> <u>(27)</u>	<u>Other Compt Approved</u> <u>(28)</u>	<u>Athletic / Activity</u> <u>(29)</u>	<u>Capital Reserve</u> <u>(690.</u> <u>1850)</u> <u>(31)</u>
Special And Extraordinary Items					
9920 Special Items – Gains					
9930 Extraordinary Items – Gains					
5520 Special Items – Losses					
5530 Extraordinary Items – Losses					
Net Change In Fund Balances	(\$19,587,211)				
Fund Balance					
0001 Fund Balance - Beginning of Fiscal Year	46,300,233				
Fund Balance - End Of Year	\$26,713,022				

Amounts Expressed in Whole Dollars	<u>Capital Reserve (1431)</u> <u>(32)</u>	<u>Other Capital Projects</u> <u>Fund</u> <u>(39)</u>	<u>Debt Service</u> <u>(40)</u>	<u>Permanent</u> <u>(90)</u>	<u>Total Governmental</u> <u>Funds</u>
Special And Extraordinary Items					
9920 Special Items – Gains					
9930 Extraordinary Items – Gains					
5520 Special Items – Losses					
5530 Extraordinary Items – Losses					
Net Change In Fund Balances		\$14,319,354	\$10,233,857		\$4,966,000
Fund Balance					
0001 Fund Balance - Beginning of Fiscal Year		38,945,842	19,937,094		105,183,169
Fund Balance - End Of Year		\$53,265,196	\$30,170,951		\$110,149,169

Amounts Expressed in Whole Dollars	<u>Food Service</u> <u>(51)</u>	<u>Child Care</u> <u>Operations</u> <u>(52)</u>	<u>Other Enterprise</u> <u>(58)</u>	<u>TOTAL</u>	<u>Internal Service</u> <u>(60)</u>
Assets And Deferred Outflows Of Resources					
Current Assets					
0100 Cash and Cash Equivalents	452,786			452,786	
0110 Investments					
0130 Due From Other Funds					
0141 Due From Other Governments					
0142 State Revenue Receivable	24,158			24,158	
0143 Federal Revenue Receivable	227,357			227,357	
0146 Due from Primary Government					
0147 Due from Component Unit					
0150 Other Receivables	51,015			51,015	
0170 Inventories					
0180 Prepaid Expenses (Expenditures)					
0190 Other Current Assets					
Total Current Assets	\$755,316			\$755,316	
Noncurrent Assets					
0211 Land					
0212 Site Improvements (Net)					
0220 Buildings and Building Improvements (Net)					
0230 Machinery, Equipment and Furniture (Net)	440,181			440,181	
0250 Construction in Progress					
0260 Long Term Prepayments					
0290 Other Noncurrent Assets					
Total Noncurrent Assets	\$440,181			\$440,181	
0910 Deferred Outflows of Resources					
Total Assets And Deferred Outflows Of Resources	\$1,195,497			\$1,195,497	

Amounts Expressed in Whole Dollars	<u>Food Service</u> <u>(51)</u>	<u>Child Care</u> <u>Operations</u> <u>(52)</u>	<u>Other Enterprise</u> <u>(58)</u>	<u>TOTAL</u>	<u>Internal Service</u> <u>(60)</u>
Liabilities And Deferred Inflows Of Resources And Net Position					
Current Liabilities					
0400 Due to Other Funds	14,857			14,857	
0411 Due to Other Governments					
0413 Due to Component Unit					
0420 Accounts Payable	357,195			357,195	
0430 Contracts Payable					
0440 Current Portion of Long-Term Debt					
0450 Short-Term Payables					
0461 Accrued Salaries and Benefits					
0462 Payroll Deductions and Withholding					
0480 Unearned Revenues	118,338			118,338	
0490 Other Current Liabilities					
Total Current Liabilities	\$490,390			\$490,390	
Noncurrent Liabilities					
0510 Bonds Payable					
0520 Extended-Term Financing Agreements Payable					
0530 Lease-Purchase Obligations					
0540 Accumulated Compensated Absences					
0550 Authority Lease Obligations					
0560 Other Post-Employment Benefits (OPEB)					
0570 Net Pension Liability					
0599 Other Noncurrent Liabilities					
Total Noncurrent Liabilities					
Total Liabilities	\$490,390			\$490,390	
0950 Deferred Inflows of Resources					
Net Position					
0791 Net Investment in Capital Assets					
0008 Restricted Net Position (0792 – 0798)	705,107			705,107	
0799 Unrestricted Net Position					
Total Net Position	\$705,107			\$705,107	
Total Liabilities And Deferred Inflows Of Resources And Net Position	\$1,195,497			\$1,195,497	

Amounts Expressed in Whole Dollars	<u>Food Service</u> <u>(51)</u>	<u>Child Care Operations</u> <u>(52)</u>	<u>Other Enterprise</u> <u>(58)</u>	<u>TOTAL</u>	<u>Internal Service</u> <u>(60)</u>
Operating Revenues					
6600 Food Service Revenue	3,819,430			3,819,430	
0071 Charges for Services					
0072 Other Operating Revenue					
Total Operating Revenues	\$3,819,430			\$3,819,430	
Operating Expenses					
100 Personnel Services – Salaries					
200 Personnel Services – Employee Benefits					
300 Purchased Professional and Technical Services	24,965			24,965	
400 Purchased Property Services	325,332			325,332	
500 Other Purchased Services	4,213,136			4,213,136	
600 Supplies	26,647			26,647	
740 Depreciation					
810 Dues and Fees	23,176			23,176	
890 Miscellaneous Expenditures	20,404			20,404	
Total Operating Expenses	\$4,633,660			\$4,633,660	
Operating Income (Loss)	(\$814,230)			(\$814,230)	
Non Operating Revenues (Expenses)					
6500 Earnings on Investments	416			416	
6920 Contributions and Donations from Private Sources					
6930 Gains or Losses on Sale of Fixed Assets					
6991 Refunds of a Prior Year Expenditure					
7000 Revenue from State Sources	77,489			77,489	
8000 Revenue from Federal Sources	953,629			953,629	
9990 Insurance Recoveries					
820 Claims and Judgments Against the LEA					
830 Interest					
TOTAL Non Operating Revenues (Expenses)	\$1,031,534			\$1,031,534	
Income (Loss) Before Contributions And Transfers	\$217,304			\$217,304	

Amounts Expressed in Whole Dollars	<u>Food Service</u> <u>(51)</u>	<u>Child Care Operations</u> <u>(52)</u>	<u>Other Enterprise</u> <u>(58)</u>	<u>TOTAL</u>	<u>Internal Service</u> <u>(60)</u>
Contributions, Transfers, and Special and Extraordinary Items					
5200 Interfund Transfers – Out					
5300 Transfers Out to Component Units/Primary Governments					
5520 Special Items – Losses					
5530 Extraordinary Items – Losses					
9300 Interfund Transfers - IN					
9500 Capital Contributions					
9700 Transfers IN From Component Units/Primary Governments					
9920 Special Items – Gains					
9930 Extraordinary Items – Gains					
Change In Net Position	\$217,304			\$217,304	
0002 Net Position - Beginning of Fiscal Year	487,803			487,803	
0003 Accounting Changes / Residual Equity Transfers					
Net Position - End Of Year	\$705,107			\$705,107	

Amounts Expressed in Whole Dollars	<u>Food Service</u> <u>(51)</u>	<u>Child Care Operations</u> <u>(52)</u>	<u>Other Enterprise</u> <u>(58)</u>	<u>TOTAL</u>	<u>Internal Service(60)</u>
Cash Flows From Operating Activities					
0011 Cash Receipts From Users	3,879,125			3,879,125	
0012 Cash Receipts From Assessments Made to Other Funds					
0013 Cash Receipts From Earnings on Investments					
0014 Cash Receipts From Other Operating Revenue					
0015 Cash Payments To Employees For Services					
0016 Cash Payments For Insurance Claims					
0017 Cash Payments To Suppliers For Goods and Services	4,663,577			4,663,577	
0018 Cash Payments For Other Operating Expenses					
Net Cash Provided By (Used For) Operating Activities	(\$784,452)			(\$784,452)	
Cash Flows From Non-Capital Financing Activities					
0021 Receipts From Local Sources - 6000					
0022 Receipts From State Sources - 7000	77,671			77,671	
0023 Receipts From Federal Sources -8000	946,757			946,757	
0024 Notes and Loans Received (Repaid)					
0025 Interest Paid on Notes/Loans - 5100-830					
0026 Operating Transfers In (Out)/Residual Equity Trans					
0027 Operating Transfers In (Out) Primary Government / Comp Unit					
0028 Receipts From Refund of Prior Year Expenditures - 6991					
0029 Special and Extraordinary Gains (losses)					
0030 Receipts from Insurance Recoveries -9990					
Net Cash Prov By (Used for) Non-Capital Financing Activities	\$1,024,428			\$1,024,428	
Cash Flows From Capital and Related Financing Activities					
0031 Payments For Fac Acq, Const, and Imp - 4000					
0032 Gain / (Loss) on Sale of Fixed Assets - 6930					
0033 Proceeds From Extended Term Financing - 9200					
0034 Principal Paid on Financing Agreements					
0035 Interest Paid on Financing Agreements - 5100-830					
0036 (Inc) Dec in Contributed Capital					
Net Cash Prov By (Used for) Capital and Related Financing Activities					
Cash Flows From Investing Activities					
0041 Earnings on Investments - 6500	416			416	
0042 Purchase of Inv Securities / Deposits to Inv Pools					
0043 Receipts From Investment Pool Withdrawals					
0044 Proceeds from Sale and Maturity of Inv Securities					

LEA : 122092102 Central Bucks SD

Printed 11/4/2019 3:21:38 PM

0045 Loans Received (Paid)

Net Cash Prov By (Used for) Investing Activities	\$416	\$416
---	--------------	--------------

	<u>Food Service</u> <u>(51)</u>	<u>Child Care Operations</u> <u>(52)</u>	<u>Other Enterprise</u> <u>(58)</u>	<u>TOTAL</u>	<u>Internal Service</u> <u>(60)</u>
Net Increase (Decrease) in Cash Flows	240,392			240,392	
0004 Cash and Cash Equivalents Beginning of Year	212,394			212,394	
Cash and Cash Equivalents at Year End	\$452,786			\$452,786	

Reconciliation of Operating Income (Loss) To Net Cash Provided by (Used For) Operating Activities

0005 Operating Income (Loss) per REP	(814,230)			(814,230)	
Adjustments					
0051 Depreciation and Net Amortization	79,993			79,993	
0052 Provision for Uncollectible Accounts					
0053 Other Adjustments					
Effect of Changes in Assets, Liabilities, Deferred Outflows and Deferred Inflows					
0054 (Inc) Dec In Accounts Receivable (0120-0150)	(50,215)			(50,215)	
0055 Advances to Other Funds (0160)					
0056 (Inc) Dec in Inventories (0170)					
0057 (Inc) Dec in Prepaid Expenses (0180)					
0058 (Inc) Dec in Other Current or Noncurrent Assets					
0064 Deferred Outflows (0910)					
0059 Inc (Dec) in Accounts Payable (0400-0450)					
0060 Inc (Dec) in Accrued Salaries/Benefits (0461)					
0065 Inc (Dec) in Net Pension Liabilities (0570)					
0066 Inc (Dec) in Other Postemp Benefit Oblig (0560)					
0061 Inc (Dec) in Payroll Deductions/Withholding (0462)					
0062 Inc (Dec) in Unearned Revenue (0480)					
0063 Inc (Dec) in Other Current or Noncurrent Liabilities					
0067 Deferred Inflows (0950)					
Total Adjustments	\$29,778			\$29,778	
Cash Provided By (Used for) Total	(\$784,452)			(\$784,452)	

COMBINED STATEMENT OF CASH FLOWS
SCHEDULE OF NONCASH INVESTING, CAPITAL, AND FINANCING ACTIVITIES

Explanation of Transaction and Balance Sheet Effect	Amount
Total	

LEA : 122092102 Central Bucks SD

Printed 11/4/2019 3:21:40 PM

Amounts Expressed in Whole Dollars

	<u>Private Purpose Trust</u> (71)	<u>Investment Trust</u> (72)	<u>Pension Trust</u> (73)	<u>Activity</u> (81)
Assets And Deferred Outflows Of Resources				
Assets				
0100 Cash and Cash Equivalents	81,354			1,384,024
0110 Investments				
0130 Due From Other Funds				
0147 Due from Component Unit				
0150 Other Receivables				
0170 Inventories				
0180 Prepaid Expenses (Expenditures)				
0190 Other Current Assets				
0220 Buildings and Building Improvements (Net)				
0230 Machinery, Equipment and Furniture (Net)				
Total Assets	\$81,354			\$1,384,024
0910 Deferred Outflows of Resources				
Total Assets And Deferred Outflows Of Resources	\$81,354			\$1,384,024

LEA : 122092102 Central Bucks SD

Printed 11/4/2019 3:21:40 PM

Amounts Expressed in Whole Dollars

	<u>Other Agency</u> <u>(89)</u>	<u>Discrete Component Units</u> <u>(98)</u>	<u>Discrete Component Units</u> <u>(99)</u>	<u>Total Fiduciary Funds</u>
Assets And Deferred Outflows Of Resources				
Assets				
0100 Cash and Cash Equivalents				1,465,378
0110 Investments				
0130 Due From Other Funds				
0147 Due from Component Unit				
0150 Other Receivables				
0170 Inventories				
0180 Prepaid Expenses (Expenditures)				
0190 Other Current Assets				
0220 Buildings and Building Improvements (Net)				
0230 Machinery, Equipment and Furniture (Net)				
Total Assets				\$1,465,378
0910 Deferred Outflows of Resources				
Total Assets And Deferred Outflows Of Resources				\$1,465,378

LEA : 122092102 Central Bucks SD

Printed 11/4/2019 3:21:40 PM

Amounts Expressed in Whole Dollars	<u>Private Purpose Trust</u> (71)	<u>Investment Trust</u> (72)	<u>Pension Trust</u> (73)	<u>Activity</u> (81)
Liabilities, Deferred Inflows Of Resources And Net Position				
Liabilities				
0400 Due to Other Funds				
0411 Due to Other Governments				
0412 Due to Primary Government				
0413 Due to Component Unit				
0420 Accounts Payable				
0430 Contracts Payable				
0450 Short-Term Payables				
0461 Accrued Salaries and Benefits				
0462 Payroll Deductions and Withholding				
0480 Unearned Revenues				
0490 Other Current Liabilities				1,384,024
Total Liabilities				\$1,384,024
0950 Deferred Inflows of Resources				
Net Position				
0791 Net Investment in Capital Assets				
0009 Restricted Net Position (0792 – 0798)				
0799 Unrestricted Net Position		81,354		
Total Net Position		\$81,354		
Total Liabilities, Deferred Inflows Of Resources And Net Position		\$81,354		\$1,384,024

LEA : 122092102 Central Bucks SD

Printed 11/4/2019 3:21:40 PM

Amounts Expressed in Whole Dollars	<u>Other Agency</u> (89)	<u>Discrete Component Units</u> (98)	<u>Discrete Component Units</u> (99)	<u>Total Fiduciary Funds</u>
Liabilities, Deferred Inflows Of Resources And Net Position				
Liabilities				
0400 Due to Other Funds				
0411 Due to Other Governments				
0412 Due to Primary Government				
0413 Due to Component Unit				
0420 Accounts Payable				
0430 Contracts Payable				
0450 Short-Term Payables				
0461 Accrued Salaries and Benefits				
0462 Payroll Deductions and Withholding				
0480 Unearned Revenues				
0490 Other Current Liabilities				1,384,024
Total Liabilities				\$1,384,024
0950 Deferred Inflows of Resources				
Net Position				
0791 Net Investment in Capital Assets				
0009 Restricted Net Position (0792 – 0798)				
0799 Unrestricted Net Position				81,354
Total Net Position				\$81,354
Total Liabilities, Deferred Inflows Of Resources And Net Position				\$1,465,378

Amounts Expressed in Whole Dollars	<u>Private Purpose Trust</u> (71)	<u>Investment Trust</u> (72)	<u>Pension Trust</u> (73)	<u>Discrete Component</u> <u>Units</u> (98)	<u>Discrete Component</u> <u>Units</u> (99)	<u>Total Fiduciary</u> <u>Funds</u>
Additions						
0091 Gifts and Contributions	15,231					15,231
0092 Other Additions	83					83
Deductions						
0093 Scholarships Awarded	15,735					15,735
0094 Other Deductions						
Change In Net Position	(\$421)					(\$421)
0006 Net Position – Beginning of Fiscal Year	81,774					81,774
0007 Net Position Held in Trust for Pension Benefits						
Net Position - End of Fiscal Year	\$81,353					\$81,353

	<u>Revenue Reported In Current Year</u>	<u>Current Year Tax Accrual</u>	<u>Prior Year Tax Accrual</u>	<u>Taxes Collected In Current Year</u>
<u>Revenue from Local Sources</u>				
6111 Current Real Estate Taxes	217,290,728.82	128,208.60	669,831.10	217,832,351.32
6112 Interim Real Estate Taxes	1,867,290.76	148,600.89	164,459.86	1,883,149.73
6113 Public Utility Realty Taxes	253,484.28			253,484.28
6151 Current Act 511 Earned Income Taxes	25,762,361.80	4,126,311.80	3,857,531.39	25,493,581.39
6153 Current Act 511 Real Estate Transfer Taxes	5,128,219.98	491,622.39	555,072.54	5,191,670.13
6411 Delinquent Real Estate Taxes	2,432,208.90	661,600.59	170,838.11	1,941,446.42
6451 Delinquent Act 511 Earned Income Taxes	1,015,476.29	104,125.35	50,946.69	962,297.63
6500 Earnings on Investments	2,629,593.66			
6700 Revenues from LEA Activities	373,742.98			
6821 State Revenue Received from Other Pennsylvania Public LEAs	8,162.00			
6832 Federal IDEA Revenue Received as Pass Through	2,456,945.62			
6910 Rentals	38,727.40			
6920 Contributions and Donations from Private Sources	267,180.78			
6941 Regular Day School Tuition	41,566.87			
6944 Receipts from Other LEAs in Pennsylvania - Education	531,068.22			
6980 Revenue from Community Services Activities	3,932,392.96			
6991 Refunds of a Prior Year Expenditure	154,165.36			
6999 Other Revenues Not Specified Above	87,712.06			
TOTAL Revenue from Local Sources	\$264,271,028.74	\$5,660,469.62	\$5,468,679.69	\$253,557,980.90

**Revenue Reported
In Current Year**

Revenue from State Sources

7110 Basic Education Funding	18,263,256.69		
7160 Tuition for Orphans Subsidy	133,919.61		
7271 Special Education funds for School-Aged Pupils	7,175,550.12		
7299 Program Revenues Not Listed Previously in the 7200 Series	1,796.72		
7311 Pupil Transportation Subsidy	2,587,932.80		
7312 Nonpublic and Charter School Pupil Transportation Subsidy	662,970.00		
7320 Rental and Sinking Fund Payments / Building Reimbursement Subsidy	1,086,397.24		
7330 Health Services (Medical, Dental, Nurse, Act 25)	352,727.39		
7340 State Property Tax Reduction Allocation	5,994,705.46		
7361 School Safety and Security Grants	25,000.00		
7505 Ready to Learn Block Grant	1,024,042.00		
7810 State Share of Social Security and Medicare Taxes	5,879,234.55		
7820 State Share of Retirement Contributions	26,941,329.41		
TOTAL Revenue from State Sources	\$70,128,861.99		

**Revenue Reported
In Current Year**

Revenue from Federal Sources

8514 NCLB, Title I - Improving the Academic Achievement of the Disadvantaged	718,324.48		
8515 NCLB, Title II - Preparing, Training and Recruiting High Quality Teachers and Principals	308,999.22		
8516 NCLB, Title III - Language Instruction for Limited English Proficient and Immigrant Students	57,503.60		
8517 NCLB, Title IV - 21St Century Schools	45,298.78		
8810 School-Based Access Medicaid Reimbursement Program (SBAP) Reimbursements (Access)	813,953.54		
8820 Medical Assistance Reimbursement for Administrative Claiming (Quarterly) Program	48,209.23		
TOTAL Revenue from Federal Sources	\$1,992,288.85		

Revenue Reported
In Current Year

Other Financing Sources

9400 Sale of or Compensation for Loss of Fixed Assets	1,800.00			
TOTAL Other Financing Sources	\$1,800.00			
TOTAL FROM ALL SOURCES	\$336,393,979.58	\$5,660,469.62	\$5,468,679.69	\$253,557,980.90

Revenue from Local Sources	264,271,028.74
Revenue from State Sources	70,128,861.99
Revenue from Federal Sources	1,992,288.85
Other Financing Sources	1,800.00
TOTAL FROM ALL SOURCES	\$336,393,979.58

General Fund (10)

		<u>Total</u>
1000 Instruction		
100 Personnel Services – Salaries		
100 Personnel Services – Salaries		112,230,283.01
Total Personnel Services – Salaries		\$112,230,283.01
200 Personnel Services – Employee Benefits		
210 Group Insurance – Contracted Provider		184,376.17
220 Social Security Contributions		8,268,688.70
230 PSERS Retirement Contributions		37,547,992.93
250 Unemployment Compensation		18,457.86
260 Workers' Compensation		894,669.85
270 Group Insurance – Self-Insurance		20,461,820.95
291 Other Retirement Plans		29,582.59
Total Personnel Services – Employee Benefits		\$67,405,589.05
300 Purchased Professional and Technical Services		
322 Professional Educational Services – Ius		1,149,369.60
323 Professional Educational Services – Other Educational Agencies		34,623.73
329 Professional Educational Services – Other		440,974.55
330 Other Professional Services		1,626,668.57
Total Purchased Professional and Technical Services		\$3,251,636.45
400 Purchased Property Services		
430 Repairs and Maintenance Services		198,203.14
440 Rentals		485,045.02
Total Purchased Property Services		\$683,248.16
500 Other Purchased Services		
550 Printing and Binding		830.00
561 Tuition To Other School Districts Within the State		26,907.78
562 Tuition To Pennsylvania Charter Schools		1,808,449.01
564 Tuition To Career and Technology Centers		4,842,842.28
567 Tuition To Approved Private Schools (APS) and PA Chartered Schools for the Deaf and Blind		232,639.85
568 Tuition To Private Residential Rehabilitative Institutions (PRRI) [In-State] and Detention Centers		707,180.26
569 Tuition – Other		2,574,558.99
580 Travel		81,178.49
594 IU Payment By Withholding for Institutionalized Children's Programs – Special Classes		2,754.72
Total Other Purchased Services		\$10,277,341.38
600 Supplies		
610 General Supplies		1,943,741.91
620 Energy		300,673.80
630 Food		84.82
640 Books and Periodicals		913,128.22
650 Supplies & Fees – Technology Related		814,384.16
Total Supplies		\$3,972,012.91
700 Property		
752 Capital Equipment – Original and Additional		16,038.31
762 Capitalized Equipment - Replacement		76,168.10

General Fund (10)

1000 Instruction

Total

Total Property	\$92,206.41
-----------------------	--------------------

800 Other Objects

810 Dues and Fees	6,629.00
-------------------	----------

Total Other Objects	\$6,629.00
----------------------------	-------------------

Total 1000 Instruction	\$197,918,946.37
-------------------------------	-------------------------

General Fund (10)

1100 Regular Programs – Elementary / Secondary

	<u>Elementary</u>	<u>Secondary</u>	<u>Federal</u>	<u>Total</u>
100 Personnel Services – Salaries				
100 Personnel Services – Salaries	42,938,743.21	44,023,091.83	654,909.46	87,616,744.50
Total Personnel Services – Salaries	\$42,938,743.21	\$44,023,091.83	\$654,909.46	\$87,616,744.50
200 Personnel Services – Employee Benefits				
210 Group Insurance – Contracted Provider	91,038.57	93,337.60		184,376.17
220 Social Security Contributions	3,176,207.55	3,271,581.93	49,468.84	6,497,258.32
230 PSERS Retirement Contributions	14,425,245.60	14,785,824.24	209,033.55	29,420,103.39
250 Unemployment Compensation	5,995.57	5,502.93	281.23	11,779.73
260 Workers' Compensation	318,955.15	282,356.52	17,729.91	619,041.58
270 Group Insurance – Self-Insurance	7,017,207.20	6,836,162.05	41,942.81	13,895,312.06
291 Other Retirement Plans	14,495.47	15,087.12		29,582.59
Total Personnel Services – Employee Benefits	\$25,049,145.11	\$25,289,852.39	\$318,456.34	\$50,657,453.84
300 Purchased Professional and Technical Services				
329 Professional Educational Services – Other	11,843.66	10,189.00		22,032.66
330 Other Professional Services	565.00	400.00		965.00
Total Purchased Professional and Technical Services	\$12,408.66	\$10,589.00		\$22,997.66
400 Purchased Property Services				
430 Repairs and Maintenance Services	100,703.39	95,245.49		195,948.88
440 Rentals	251,993.86	233,051.16		485,045.02
Total Purchased Property Services	\$352,697.25	\$328,296.65		\$680,993.90
500 Other Purchased Services				
550 Printing and Binding		830.00		830.00
562 Tuition To Pennsylvania Charter Schools	168,087.98	1,023,437.88		1,191,525.86
568 Tuition To Private Residential Rehabilitative Institutions (PRRI) [In-State] and Detention Centers	0.45	0.46		0.91
580 Travel	15,460.05	21,916.27	228.80	37,605.12
Total Other Purchased Services	\$183,548.48	\$1,046,184.61	\$228.80	\$1,229,961.89
600 Supplies				
610 General Supplies	1,083,320.92	622,651.87	51,663.84	1,757,636.63
620 Energy	87,972.50	197,376.27		285,348.77
640 Books and Periodicals	293,465.82	574,320.34		867,786.16
650 Supplies & Fees – Technology Related	90,106.31	685,830.48		775,936.79
Total Supplies	\$1,554,865.55	\$2,080,178.96	\$51,663.84	\$3,686,708.35
700 Property				
752 Capital Equipment – Original and Additional		8,316.00		8,316.00
762 Capitalized Equipment - Replacement		76,168.10		76,168.10
Total Property		\$84,484.10		\$84,484.10
800 Other Objects				
810 Dues and Fees	30.00	4,826.00		4,856.00
Total Other Objects	\$30.00	\$4,826.00		\$4,856.00
Total 1100 Regular Programs – Elementary / Secondary	\$70,091,438.26	\$72,867,503.54	\$1,025,258.44	\$143,984,200.24

General Fund (10)

1110 Regular Programs

	<u>Elementary</u>	<u>Secondary</u>	<u>Federal</u>	<u>Total</u>
100 Personnel Services – Salaries				
100 Personnel Services – Salaries	42,938,743.21	44,023,091.83		86,961,835.04
Total Personnel Services – Salaries	\$42,938,743.21	\$44,023,091.83		\$86,961,835.04
200 Personnel Services – Employee Benefits				
210 Group Insurance – Contracted Provider	91,038.57	93,337.60		184,376.17
220 Social Security Contributions	3,176,207.55	3,271,581.93		6,447,789.48
230 PSERS Retirement Contributions	14,425,245.60	14,785,824.24		29,211,069.84
250 Unemployment Compensation	5,995.57	5,502.93		11,498.50
260 Workers' Compensation	318,955.15	282,356.52		601,311.67
270 Group Insurance – Self-Insurance	7,017,207.20	6,836,162.05		13,853,369.25
291 Other Retirement Plans	14,495.47	15,087.12		29,582.59
Total Personnel Services – Employee Benefits	\$25,049,145.11	\$25,289,852.39		\$50,338,997.50
300 Purchased Professional and Technical Services				
329 Professional Educational Services – Other	11,843.66	10,189.00		22,032.66
330 Other Professional Services	565.00	400.00		965.00
Total Purchased Professional and Technical Services	\$12,408.66	\$10,589.00		\$22,997.66
400 Purchased Property Services				
430 Repairs and Maintenance Services	100,703.39	95,245.49		195,948.88
440 Rentals	251,993.86	233,051.16		485,045.02
Total Purchased Property Services	\$352,697.25	\$328,296.65		\$680,993.90
500 Other Purchased Services				
550 Printing and Binding		830.00		830.00
562 Tuition To Pennsylvania Charter Schools	168,087.98	1,023,437.88		1,191,525.86
568 Tuition To Private Residential Rehabilitative Institutions (PRRI) [In-State] and Detention Centers	0.45	0.46		0.91
580 Travel	15,460.05	21,916.27		37,376.32
Total Other Purchased Services	\$183,548.48	\$1,046,184.61		\$1,229,733.09
600 Supplies				
610 General Supplies	1,083,320.92	622,651.87		1,705,972.79
620 Energy	87,972.50	197,376.27		285,348.77
640 Books and Periodicals	293,465.82	574,320.34		867,786.16
650 Supplies & Fees – Technology Related	90,106.31	685,830.48		775,936.79
Total Supplies	\$1,554,865.55	\$2,080,178.96		\$3,635,044.51
700 Property				
752 Capital Equipment – Original and Additional		8,316.00		8,316.00
762 Capitalized Equipment - Replacement		76,168.10		76,168.10
Total Property		\$84,484.10		\$84,484.10
800 Other Objects				
810 Dues and Fees	30.00	4,826.00		4,856.00
Total Other Objects	\$30.00	\$4,826.00		\$4,856.00
Total 1110 Regular Programs	\$70,091,438.26	\$72,867,503.54		\$142,958,941.80

General Fund (10)

	<u>Elementary</u>	<u>Secondary</u>	<u>Federal</u>	<u>Total</u>
1190 Federally-Funded Regular Programs				
100 Personnel Services – Salaries				
100 Personnel Services – Salaries			654,909.46	654,909.46
Total Personnel Services – Salaries			\$654,909.46	\$654,909.46
200 Personnel Services – Employee Benefits				
220 Social Security Contributions			49,468.84	49,468.84
230 PSERS Retirement Contributions			209,033.55	209,033.55
250 Unemployment Compensation			281.23	281.23
260 Workers' Compensation			17,729.91	17,729.91
270 Group Insurance – Self-Insurance			41,942.81	41,942.81
Total Personnel Services – Employee Benefits			\$318,456.34	\$318,456.34
500 Other Purchased Services				
580 Travel			228.80	228.80
Total Other Purchased Services			\$228.80	\$228.80
600 Supplies				
610 General Supplies			51,663.84	51,663.84
Total Supplies			\$51,663.84	\$51,663.84
Total 1190 Federally-Funded Regular Programs			\$1,025,258.44	\$1,025,258.44

General Fund (10)

1200 Special Programs – Elementary / Secondary

	<u>Elementary</u>	<u>Secondary</u>	<u>Federal</u>	<u>Total</u>
100 Personnel Services – Salaries				
100 Personnel Services – Salaries	11,689,354.03	10,390,395.96	1,720,559.10	23,800,309.09
Total Personnel Services – Salaries	\$11,689,354.03	\$10,390,395.96	\$1,720,559.10	\$23,800,309.09
200 Personnel Services – Employee Benefits				
220 Social Security Contributions	838,625.87	745,980.72	127,091.97	1,711,698.56
230 PSERS Retirement Contributions	3,877,338.47	3,426,983.84	555,031.81	7,859,354.12
250 Unemployment Compensation	3,392.89	3,040.12	145.06	6,578.07
260 Workers' Compensation	141,669.23	117,201.57	9,686.53	268,557.33
270 Group Insurance – Self-Insurance	3,259,478.44	2,907,111.58	269,666.50	6,436,256.52
Total Personnel Services – Employee Benefits	\$8,120,504.90	\$7,200,317.83	\$961,621.87	\$16,282,444.60
300 Purchased Professional and Technical Services				
322 Professional Educational Services – lus	546,360.63	546,360.63	56,648.34	1,149,369.60
329 Professional Educational Services – Other			342,780.75	342,780.75
330 Other Professional Services	1,625,703.57			1,625,703.57
Total Purchased Professional and Technical Services	\$2,172,064.20	\$546,360.63	\$399,429.09	\$3,117,853.92
400 Purchased Property Services				
430 Repairs and Maintenance Services	2,246.48	7.78		2,254.26
Total Purchased Property Services	\$2,246.48	\$7.78		\$2,254.26
500 Other Purchased Services				
562 Tuition To Pennsylvania Charter Schools	9,805.40	607,117.75		616,923.15
567 Tuition To Approved Private Schools (APS) and PA Chartered Schools for the Deaf and Blind	113,993.53	118,646.32		232,639.85
568 Tuition To Private Residential Rehabilitative Institutions (PRRI) [In-State] and Detention Centers	311,158.92	396,020.43		707,179.35
580 Travel	28,266.09	7,860.43		36,126.52
594 IU Payment By Withholding for Institutionalized Children's Programs – Special Classes	1,349.81	1,404.91		2,754.72
Total Other Purchased Services	\$464,573.75	\$1,131,049.84		\$1,595,623.59
600 Supplies				
610 General Supplies	81,415.25	59,210.41	43,442.44	184,068.10
620 Energy	7,858.28	7,466.75		15,325.03
640 Books and Periodicals	24,469.90	9,726.33		34,196.23
650 Supplies & Fees – Technology Related	6,715.69	5,677.65	21,817.00	34,210.34
Total Supplies	\$120,459.12	\$82,081.14	\$65,259.44	\$267,799.70
700 Property				
752 Capital Equipment – Original and Additional	7,722.31			7,722.31
Total Property	\$7,722.31			\$7,722.31
800 Other Objects				
810 Dues and Fees	1,773.00			1,773.00
Total Other Objects	\$1,773.00			\$1,773.00
Total 1200 Special Programs – Elementary / Secondary	\$22,578,697.79	\$19,350,213.18	\$3,146,869.50	\$45,075,780.47

General Fund (10)

1210 Life Skills Support

	<u>Elementary</u>	<u>Secondary</u>	<u>Federal</u>	<u>Total</u>
100 Personnel Services – Salaries				
100 Personnel Services – Salaries	239,355.17	283,848.45		523,203.62
Total Personnel Services – Salaries	\$239,355.17	\$283,848.45		\$523,203.62
200 Personnel Services – Employee Benefits				
220 Social Security Contributions	17,036.55	20,174.52		37,211.07
230 PSERS Retirement Contributions	79,803.09	94,810.84		174,613.93
250 Unemployment Compensation	92.22	82.16		174.38
260 Workers' Compensation	5,974.62	5,380.31		11,354.93
270 Group Insurance – Self-Insurance	120,436.23	136,518.01		256,954.24
Total Personnel Services – Employee Benefits	\$223,342.71	\$256,965.84		\$480,308.55
600 Supplies				
610 General Supplies	1,933.59	1,303.40		3,236.99
650 Supplies & Fees – Technology Related	59.90	955.60		1,015.50
Total Supplies	\$1,993.49	\$2,259.00		\$4,252.49
Total 1210 Life Skills Support	\$464,691.37	\$543,073.29		\$1,007,764.66

General Fund (10)

	<u>Elementary</u>	<u>Secondary</u>	<u>Federal</u>	<u>Total</u>
1220 Sensory Support				
100 Personnel Services – Salaries				
100 Personnel Services – Salaries	92,242.50	109,368.00		201,610.50
Total Personnel Services – Salaries	\$92,242.50	\$109,368.00		\$201,610.50
200 Personnel Services – Employee Benefits				
220 Social Security Contributions	6,576.03	7,936.25		14,512.28
230 PSERS Retirement Contributions	30,819.12	36,526.54		67,345.66
250 Unemployment Compensation	7.06	7.06		14.12
260 Workers' Compensation	472.51	472.51		945.02
270 Group Insurance – Self-Insurance	16,194.15	16,194.15		32,388.30
Total Personnel Services – Employee Benefits	\$54,068.87	\$61,136.51		\$115,205.38
500 Other Purchased Services				
580 Travel		537.53		537.53
Total Other Purchased Services		\$537.53		\$537.53
600 Supplies				
610 General Supplies	7,988.78	100.00		8,088.78
Total Supplies	\$7,988.78	\$100.00		\$8,088.78
Total 1220 Sensory Support	\$154,300.15	\$171,142.04		\$325,442.19

General Fund (10)

1230 Emotional Support

	<u>Elementary</u>	<u>Secondary</u>	<u>Federal</u>	<u>Total</u>
100 Personnel Services – Salaries				
100 Personnel Services – Salaries	1,620,836.37	1,472,318.93		3,093,155.30
Total Personnel Services – Salaries	\$1,620,836.37	\$1,472,318.93		\$3,093,155.30
200 Personnel Services – Employee Benefits				
220 Social Security Contributions	115,459.02	106,807.39		222,266.41
230 PSERS Retirement Contributions	538,562.49	491,745.51		1,030,308.00
250 Unemployment Compensation	384.72	250.83		635.55
260 Workers' Compensation	25,202.53	16,331.49		41,534.02
270 Group Insurance – Self-Insurance	672,280.61	433,474.32		1,105,754.93
Total Personnel Services – Employee Benefits	\$1,351,889.37	\$1,048,609.54		\$2,400,498.91
600 Supplies				
610 General Supplies	32,355.92	10,887.91		43,243.83
640 Books and Periodicals	1,110.65	631.08		1,741.73
650 Supplies & Fees – Technology Related	2,958.92	2,820.32		5,779.24
Total Supplies	\$36,425.49	\$14,339.31		\$50,764.80
Total 1230 Emotional Support	\$3,009,151.23	\$2,535,267.78		\$5,544,419.01

General Fund (10)

1240 Academic Support

	<u>Elementary</u>	<u>Secondary</u>	<u>Federal</u>	<u>Total</u>
100 Personnel Services – Salaries				
100 Personnel Services – Salaries	7,713,385.61	6,607,488.41	1,720,559.10	16,041,433.12
Total Personnel Services – Salaries	\$7,713,385.61	\$6,607,488.41	\$1,720,559.10	\$16,041,433.12
200 Personnel Services – Employee Benefits				
220 Social Security Contributions	555,724.94	474,699.22	127,091.97	1,157,516.13
230 PSERS Retirement Contributions	2,553,444.90	2,164,345.01	555,031.81	5,272,821.72
250 Unemployment Compensation	2,143.51	1,965.64	145.06	4,254.21
260 Workers' Compensation	58,079.86	45,932.01	9,686.53	113,698.40
270 Group Insurance – Self-Insurance	1,566,423.71	1,356,145.08	269,666.50	3,192,235.29
Total Personnel Services – Employee Benefits	\$4,735,816.92	\$4,043,086.96	\$961,621.87	\$9,740,525.75
300 Purchased Professional and Technical Services				
322 Professional Educational Services – lus	546,360.63	546,360.63	56,648.34	1,149,369.60
329 Professional Educational Services – Other			342,780.75	342,780.75
Total Purchased Professional and Technical Services	\$546,360.63	\$546,360.63	\$399,429.09	\$1,492,150.35
500 Other Purchased Services				
568 Tuition To Private Residential Rehabilitative Institutions (PRRI) [In-State] and Detention Centers	311,158.92	396,020.43		707,179.35
580 Travel	575.00	7,322.90		7,897.90
Total Other Purchased Services	\$311,733.92	\$403,343.33		\$715,077.25
600 Supplies				
610 General Supplies	33,362.35	32,917.31	43,442.44	109,722.10
640 Books and Periodicals	19,897.00	9,095.25		28,992.25
650 Supplies & Fees – Technology Related	3,696.87	1,901.73	21,817.00	27,415.60
Total Supplies	\$56,956.22	\$43,914.29	\$65,259.44	\$166,129.95
Total 1240 Academic Support	\$13,364,253.30	\$11,644,193.62	\$3,146,869.50	\$28,155,316.42

General Fund (10)

	<u>Elementary</u>	<u>Secondary</u>	<u>Federal</u>	<u>Total</u>
1241 Learning Support – Public				
100 Personnel Services – Salaries				
100 Personnel Services – Salaries	6,832,157.17	6,543,697.01	1,720,559.10	15,096,413.28
Total Personnel Services – Salaries	\$6,832,157.17	\$6,543,697.01	\$1,720,559.10	\$15,096,413.28
200 Personnel Services – Employee Benefits				
220 Social Security Contributions	489,296.77	469,789.80	127,091.97	1,086,178.54
230 PSERS Retirement Contributions	2,250,329.09	2,142,054.44	555,031.81	4,947,415.34
250 Unemployment Compensation	2,068.00	1,959.72	145.06	4,172.78
260 Workers' Compensation	52,978.08	45,532.49	9,686.53	108,197.10
270 Group Insurance – Self-Insurance	1,412,652.44	1,345,025.44	269,666.50	3,027,344.38
Total Personnel Services – Employee Benefits	\$4,207,324.38	\$4,004,361.89	\$961,621.87	\$9,173,308.14
300 Purchased Professional and Technical Services				
322 Professional Educational Services – lus	546,360.63	546,360.63	56,648.34	1,149,369.60
329 Professional Educational Services – Other			342,780.75	342,780.75
Total Purchased Professional and Technical Services	\$546,360.63	\$546,360.63	\$399,429.09	\$1,492,150.35
500 Other Purchased Services				
568 Tuition To Private Residential Rehabilitative Institutions (PRRI) [In-State] and Detention Centers	311,158.92	396,020.43		707,179.35
580 Travel		6,977.90		6,977.90
Total Other Purchased Services	\$311,158.92	\$402,998.33		\$714,157.25
600 Supplies				
610 General Supplies	28,448.44	32,917.31	43,442.44	104,808.19
640 Books and Periodicals	19,788.58	9,095.25		28,883.83
650 Supplies & Fees – Technology Related	3,696.87	1,901.73	21,817.00	27,415.60
Total Supplies	\$51,933.89	\$43,914.29	\$65,259.44	\$161,107.62
Total 1241 Learning Support – Public	\$11,948,934.99	\$11,541,332.15	\$3,146,869.50	\$26,637,136.64

General Fund (10)

	<u>Elementary</u>	<u>Secondary</u>	<u>Federal</u>	<u>Total</u>
1243 Gifted Support				
100 Personnel Services – Salaries				
100 Personnel Services – Salaries	881,228.44	63,791.40		945,019.84
Total Personnel Services – Salaries	\$881,228.44	\$63,791.40		\$945,019.84
200 Personnel Services – Employee Benefits				
220 Social Security Contributions	66,428.17	4,909.42		71,337.59
230 PSERS Retirement Contributions	303,115.81	22,290.57		325,406.38
250 Unemployment Compensation	75.51	5.92		81.43
260 Workers' Compensation	5,101.78	399.52		5,501.30
270 Group Insurance – Self-Insurance	153,771.27	11,119.64		164,890.91
Total Personnel Services – Employee Benefits	\$528,492.54	\$38,725.07		\$567,217.61
500 Other Purchased Services				
580 Travel	575.00	345.00		920.00
Total Other Purchased Services	\$575.00	\$345.00		\$920.00
600 Supplies				
610 General Supplies	4,913.91			4,913.91
640 Books and Periodicals	108.42			108.42
Total Supplies	\$5,022.33			\$5,022.33
Total 1243 Gifted Support	\$1,415,318.31	\$102,861.47		\$1,518,179.78

General Fund (10)

1270 Multi-Handicapped Support

100 Personnel Services – Salaries

	<u>Elementary</u>	<u>Secondary</u>	<u>Federal</u>	<u>Total</u>
100 Personnel Services – Salaries	151,556.77	62,537.81		214,094.58
Total Personnel Services – Salaries	\$151,556.77	\$62,537.81		\$214,094.58

200 Personnel Services – Employee Benefits

220 Social Security Contributions	10,934.38	4,510.00		15,444.38
230 PSERS Retirement Contributions	50,621.05	20,896.45		71,517.50
250 Unemployment Compensation	30.49	21.18		51.67
260 Workers' Compensation	1,981.39	1,417.53		3,398.92
270 Group Insurance – Self-Insurance	53,300.57	32,388.30		85,688.87
Total Personnel Services – Employee Benefits	\$116,867.88	\$59,233.46		\$176,101.34

600 Supplies

610 General Supplies	328.97	8,577.72		8,906.69
Total Supplies	\$328.97	\$8,577.72		\$8,906.69

Total 1270 Multi-Handicapped Support

Total 1270 Multi-Handicapped Support	\$268,753.62	\$130,348.99		\$399,102.61
---	---------------------	---------------------	--	---------------------

General Fund (10)

	<u>Elementary</u>	<u>Secondary</u>	<u>Federal</u>	<u>Total</u>
1290 Special Programs - Other Support				
100 Personnel Services – Salaries				
100 Personnel Services – Salaries	1,871,977.61	1,854,834.36		3,726,811.97
Total Personnel Services – Salaries	\$1,871,977.61	\$1,854,834.36		\$3,726,811.97
200 Personnel Services – Employee Benefits				
220 Social Security Contributions	132,894.95	131,853.34		264,748.29
230 PSERS Retirement Contributions	624,087.82	618,659.49		1,242,747.31
250 Unemployment Compensation	734.89	713.25		1,448.14
260 Workers' Compensation	49,958.32	47,667.72		97,626.04
270 Group Insurance – Self-Insurance	830,843.17	932,391.72		1,763,234.89
Total Personnel Services – Employee Benefits	\$1,638,519.15	\$1,731,285.52		\$3,369,804.67
300 Purchased Professional and Technical Services				
330 Other Professional Services	1,625,703.57			1,625,703.57
Total Purchased Professional and Technical Services	\$1,625,703.57			\$1,625,703.57
400 Purchased Property Services				
430 Repairs and Maintenance Services	2,246.48	7.78		2,254.26
Total Purchased Property Services	\$2,246.48	\$7.78		\$2,254.26
500 Other Purchased Services				
562 Tuition To Pennsylvania Charter Schools	9,805.40	607,117.75		616,923.15
567 Tuition To Approved Private Schools (APS) and PA Chartered Schools for the Deaf and Blind	113,993.53	118,646.32		232,639.85
580 Travel	27,691.09			27,691.09
594 IU Payment By Withholding for Institutionalized Children's Programs – Special Classes	1,349.81	1,404.91		2,754.72
Total Other Purchased Services	\$152,839.83	\$727,168.98		\$880,008.81
600 Supplies				
610 General Supplies	5,445.64	5,424.07		10,869.71
620 Energy	7,858.28	7,466.75		15,325.03
640 Books and Periodicals	3,462.25			3,462.25
Total Supplies	\$16,766.17	\$12,890.82		\$29,656.99
700 Property				
752 Capital Equipment – Original and Additional	7,722.31			7,722.31
Total Property	\$7,722.31			\$7,722.31
800 Other Objects				
810 Dues and Fees	1,773.00			1,773.00
Total Other Objects	\$1,773.00			\$1,773.00
Total 1290 Special Programs - Other Support	\$5,317,548.12	\$4,326,187.46		\$9,643,735.58

LEA : 122092102 Central Bucks SD

Printed 11/4/2019 3:21:50 PM

General Fund (10)

1300 Vocational Education

500 Other Purchased Services

564 Tuition To Career and Technology Centers

Total Other Purchased Services

Total 1300 Vocational Education

Elementary

Secondary

Federal

Total

4,842,842.28

4,842,842.28

\$4,842,842.28

\$4,842,842.28

\$4,842,842.28

\$4,842,842.28

General Fund (10)

	<u>Elementary</u>	<u>Secondary</u>	<u>Federal</u>	<u>Total</u>
1400 Other Instructional Programs – Elementary / Secondary				
100 Personnel Services – Salaries				
100 Personnel Services – Salaries	572,225.97	241,003.45		813,229.42
Total Personnel Services – Salaries	\$572,225.97	\$241,003.45		\$813,229.42
200 Personnel Services – Employee Benefits				
220 Social Security Contributions	42,073.72	17,658.10		59,731.82
230 PSERS Retirement Contributions	191,242.76	77,292.66		268,535.42
250 Unemployment Compensation	73.00	27.06		100.06
260 Workers' Compensation	4,917.93	2,153.01		7,070.94
270 Group Insurance – Self-Insurance	85,349.60	44,902.77		130,252.37
Total Personnel Services – Employee Benefits	\$323,657.01	\$142,033.60		\$465,690.61
300 Purchased Professional and Technical Services				
329 Professional Educational Services – Other	5,844.26	70,316.88		76,161.14
Total Purchased Professional and Technical Services	\$5,844.26	\$70,316.88		\$76,161.14
500 Other Purchased Services				
561 Tuition To Other School Districts Within the State		26,907.78		26,907.78
569 Tuition – Other		2,574,558.99		2,574,558.99
580 Travel	1,533.20	5,913.65		7,446.85
Total Other Purchased Services	\$1,533.20	\$2,607,380.42		\$2,608,913.62
600 Supplies				
610 General Supplies	1,054.17	241.30		1,295.47
630 Food	61.96	22.86		84.82
640 Books and Periodicals	5,461.46	5,684.37		11,145.83
650 Supplies & Fees – Technology Related	3,095.29	1,141.74		4,237.03
Total Supplies	\$9,672.88	\$7,090.27		\$16,763.15
Total 1400 Other Instructional Programs – Elementary / Secondary	\$912,933.32	\$3,067,824.62		\$3,980,757.94

General Fund (10)

1420 Summer School

100 Personnel Services – Salaries

100 Personnel Services – Salaries

Total Personnel Services – Salaries

200 Personnel Services – Employee Benefits

220 Social Security Contributions

230 PSERS Retirement Contributions

Total Personnel Services – Employee Benefits

Total 1420 Summer School

	<u>Elementary</u>	<u>Secondary</u>	<u>Federal</u>	<u>Total</u>
		5,284.12		5,284.12
		\$5,284.12		\$5,284.12
		404.23		404.23
		1,766.49		1,766.49
		\$2,170.72		\$2,170.72
		\$7,454.84		\$7,454.84

General Fund (10)

	<u>Elementary</u>	<u>Secondary</u>	<u>Federal</u>	<u>Total</u>
1430 Homebound Instruction				
100 Personnel Services – Salaries				
100 Personnel Services – Salaries	13,392.74	28,570.08		41,962.82
Total Personnel Services – Salaries	\$13,392.74	\$28,570.08		\$41,962.82
200 Personnel Services – Employee Benefits				
220 Social Security Contributions	1,016.38	2,169.89		3,186.27
230 PSERS Retirement Contributions	4,426.71	6,276.02		10,702.73
250 Unemployment Compensation		0.62		0.62
260 Workers' Compensation		381.05		381.05
Total Personnel Services – Employee Benefits	\$5,443.09	\$8,827.58		\$14,270.67
300 Purchased Professional and Technical Services				
329 Professional Educational Services – Other		68,161.14		68,161.14
Total Purchased Professional and Technical Services		\$68,161.14		\$68,161.14
500 Other Purchased Services				
580 Travel		5,348.11		5,348.11
Total Other Purchased Services		\$5,348.11		\$5,348.11
Total 1430 Homebound Instruction	\$18,835.83	\$110,906.91		\$129,742.74

General Fund (10)

1440 Alternative Regular Education Programs

Elementary

Secondary

Federal

Total

500 Other Purchased Services

561 Tuition To Other School Districts Within the State

26,907.78

26,907.78

569 Tuition – Other

2,574,558.99

2,574,558.99

Total Other Purchased Services

\$2,601,466.77

\$2,601,466.77

Total 1440 Alternative Regular Education Programs

\$2,601,466.77

\$2,601,466.77

General Fund (10)

1441 Adjudicated / Court-Placed Programs

Elementary

Secondary

Federal

Total

500 Other Purchased Services

561 Tuition To Other School Districts Within the State

26,907.78

26,907.78

569 Tuition – Other

428,621.65

428,621.65

Total Other Purchased Services

\$455,529.43

\$455,529.43

Total 1441 Adjudicated / Court-Placed Programs

\$455,529.43

\$455,529.43

General Fund (10)

	<u>Elementary</u>	<u>Secondary</u>	<u>Federal</u>	<u>Total</u>
1442 Alternative Education Programs				
500 Other Purchased Services				
569 Tuition – Other		2,145,937.34		2,145,937.34
Total Other Purchased Services		\$2,145,937.34		\$2,145,937.34
Total 1442 Alternative Education Programs		\$2,145,937.34		\$2,145,937.34

General Fund (10)

1450 Instructional Programs Outside the Established School Day

100 Personnel Services – Salaries

100 Personnel Services – Salaries

Total Personnel Services – Salaries

200 Personnel Services – Employee Benefits

220 Social Security Contributions

230 PSERS Retirement Contributions

Total Personnel Services – Employee Benefits

Total 1450 Instructional Programs Outside the Established School Day

	<u>Elementary</u>	<u>Secondary</u>	<u>Federal</u>	<u>Total</u>
		1,015.65		1,015.65
		\$1,015.65		\$1,015.65
		75.51		75.51
		339.52		339.52
		\$415.03		\$415.03
		\$1,430.68		\$1,430.68

General Fund (10)

	<u>Elementary</u>	<u>Secondary</u>	<u>Federal</u>	<u>Total</u>
1490 Additional Other Instructional Programs				
100 Personnel Services – Salaries				
100 Personnel Services – Salaries	558,833.23	206,133.60		764,966.83
Total Personnel Services – Salaries	\$558,833.23	\$206,133.60		\$764,966.83
200 Personnel Services – Employee Benefits				
220 Social Security Contributions	41,057.34	15,008.47		56,065.81
230 PSERS Retirement Contributions	186,816.05	68,910.63		255,726.68
250 Unemployment Compensation	73.00	26.44		99.44
260 Workers' Compensation	4,917.93	1,771.96		6,689.89
270 Group Insurance – Self-Insurance	85,349.60	44,902.77		130,252.37
Total Personnel Services – Employee Benefits	\$318,213.92	\$130,620.27		\$448,834.19
300 Purchased Professional and Technical Services				
329 Professional Educational Services – Other	5,844.26	2,155.74		8,000.00
Total Purchased Professional and Technical Services	\$5,844.26	\$2,155.74		\$8,000.00
500 Other Purchased Services				
580 Travel	1,533.20	565.54		2,098.74
Total Other Purchased Services	\$1,533.20	\$565.54		\$2,098.74
600 Supplies				
610 General Supplies	1,054.17	241.30		1,295.47
630 Food	61.96	22.86		84.82
640 Books and Periodicals	5,461.46	5,684.37		11,145.83
650 Supplies & Fees – Technology Related	3,095.29	1,141.74		4,237.03
Total Supplies	\$9,672.88	\$7,090.27		\$16,763.15
Total 1490 Additional Other Instructional Programs	\$894,097.49	\$346,565.42		\$1,240,662.91

General Fund (10)

1500 Nonpublic School Programs

Elementary

Secondary

Federal

Total

300 Purchased Professional and Technical Services

323 Professional Educational Services – Other Educational Agencies

34,623.73

Total Purchased Professional and Technical Services

\$34,623.73

600 Supplies

610 General Supplies

741.71

Total Supplies

\$741.71

Total 1500 Nonpublic School Programs

\$35,365.44

General Fund (10)

2000 Support Services

Total

100 Personnel Services – Salaries

100 Personnel Services – Salaries 44,997,512.70

Total Personnel Services – Salaries \$44,997,512.70

200 Personnel Services – Employee Benefits

220 Social Security Contributions 3,308,461.95

230 PSERS Retirement Contributions 14,854,246.10

240 Tuition Reimbursement 228,725.81

250 Unemployment Compensation 8,166.73

260 Workers' Compensation 378,457.58

270 Group Insurance – Self-Insurance 9,870,093.93

291 Other Retirement Plans 218,986.75

Total Personnel Services – Employee Benefits \$28,867,138.85

300 Purchased Professional and Technical Services

310 Official / Administrative Services 788,621.33

329 Professional Educational Services – Other 48,748.74

330 Other Professional Services 634,340.01

340 Technical Services 377,136.44

350 Security / Safety Services 57,437.85

360 Employee Training and Development Services 31,657.50

Total Purchased Professional and Technical Services \$1,937,941.87

400 Purchased Property Services

410 Cleaning Services 533,378.55

420 Utility Services 435,307.75

430 Repairs and Maintenance Services 1,930,585.49

440 Rentals 51,448.00

460 Extermination Services 27,040.00

490 Other Purchased Property Services 299,653.63

Total Purchased Property Services \$3,277,413.42

500 Other Purchased Services

511 Student Transportation Services from Another LEA Within the State 175,055.51

513 Contracted Carriers 8,081,576.18

516 Student Transportation Services From the IU 475,668.19

520 Insurance – General 206,567.50

521 Fire Insurance 529,618.00

522 Automotive Liability Insurance 200,407.00

523 General Property and Liability Insurance 80,818.00

529 Other Insurance 53,754.00

530 Communications 666,325.89

549 Other Advertising/Public Relations 24,009.66

550 Printing and Binding 9,650.00

580 Travel 171,479.07

595 IU Payments By Withholding 137,812.61

596 Direct Payments To Intermediate Units 85,512.00

Total Other Purchased Services \$10,898,253.61

LEA : 122092102 Central Bucks SD

Printed 11/4/2019 3:21:55 PM

General Fund (10)

2000 Support Services

Total

600 Supplies

610 General Supplies	2,483,679.76
620 Energy	3,401,095.90
630 Food	63,512.53
640 Books and Periodicals	102,593.59
650 Supplies & Fees – Technology Related	523,240.68

Total Supplies	\$6,574,122.46
-----------------------	-----------------------

700 Property

752 Capital Equipment – Original and Additional	46,068.00
762 Capitalized Equipment - Replacement	106,884.76

Total Property	\$152,952.76
-----------------------	---------------------

800 Other Objects

810 Dues and Fees	56,206.93
820 Claims and Judgments Against the LEA	23,250.00
890 Miscellaneous Expenditures	1,274.62

Total Other Objects	\$80,731.55
----------------------------	--------------------

Total 2000 Support Services	\$96,786,067.22
------------------------------------	------------------------

General Fund (10)

	<u>Elementary</u>	<u>Secondary</u>	<u>Federal</u>	<u>Total</u>
2100 Support Services – Students				
100 Personnel Services – Salaries				
100 Personnel Services – Salaries	4,080,878.22	4,024,815.29	33,561.93	8,477,562.24
Total Personnel Services – Salaries	\$4,080,878.22	\$4,024,815.29	\$33,561.93	\$8,477,562.24
200 Personnel Services – Employee Benefits				
220 Social Security Contributions	298,943.77	294,439.71	2,567.49	620,093.59
230 PSERS Retirement Contributions	1,368,170.38	1,333,066.30	9,737.89	2,823,187.93
250 Unemployment Compensation	343.78	383.76		808.95
260 Workers' Compensation	23,554.61	25,676.43		54,564.70
270 Group Insurance – Self-Insurance	745,432.97	768,417.26		1,675,143.31
291 Other Retirement Plans	3,244.68	3,377.11		6,621.79
Total Personnel Services – Employee Benefits	\$2,439,690.19	\$2,425,360.57	\$12,305.38	\$5,180,420.27
300 Purchased Professional and Technical Services				
329 Professional Educational Services – Other		31,058.40		31,058.40
330 Other Professional Services	35,766.94	26,991.75		62,758.69
Total Purchased Professional and Technical Services	\$35,766.94	\$58,050.15		\$93,817.09
400 Purchased Property Services				
430 Repairs and Maintenance Services	32.55	33.87		66.42
Total Purchased Property Services	\$32.55	\$33.87		\$66.42
500 Other Purchased Services				
530 Communications		600.00		600.00
580 Travel	790.95	338.19		1,129.14
Total Other Purchased Services	\$790.95	\$938.19		\$1,729.14
600 Supplies				
610 General Supplies	21,971.65	18,024.06		39,995.71
630 Food	9.38	8.65		18.03
640 Books and Periodicals	102.43	94.56		196.99
650 Supplies & Fees – Technology Related	8,866.21	3,935.84		12,802.05
Total Supplies	\$30,949.67	\$22,063.11		\$53,012.78
Total 2100 Support Services – Students	\$6,588,108.52	\$6,531,261.18	\$45,867.31	\$13,806,607.94

General Fund (10)

	<u>Elementary</u>	<u>Secondary</u>	<u>Federal</u>	<u>Total</u>
2110 Supervision of Student Services				
100 Personnel Services – Salaries				
100 Personnel Services – Salaries	78,386.45	84,918.65		163,305.10
Total Personnel Services – Salaries	\$78,386.45	\$84,918.65		\$163,305.10
200 Personnel Services – Employee Benefits				
220 Social Security Contributions	5,594.23	5,822.57		11,416.80
230 PSERS Retirement Contributions	16,687.06	17,368.17		34,055.23
250 Unemployment Compensation	3.46	3.60		7.06
260 Workers' Compensation	231.53	240.98		472.51
270 Group Insurance – Self-Insurance	7,935.13	8,259.02		16,194.15
291 Other Retirement Plans	1,528.55	1,590.94		3,119.49
Total Personnel Services – Employee Benefits	\$31,979.96	\$33,285.28		\$65,265.24
Total 2110 Supervision of Student Services	\$110,366.41	\$118,203.93		\$228,570.34

General Fund (10)

	<u>Elementary</u>	<u>Secondary</u>	<u>Federal</u>	<u>Total</u>
2111 Supervision of Student Services – Head of Component				
100 Personnel Services – Salaries				
100 Personnel Services – Salaries	78,386.45	84,918.65		163,305.10
Total Personnel Services – Salaries	\$78,386.45	\$84,918.65		\$163,305.10
200 Personnel Services – Employee Benefits				
220 Social Security Contributions	5,594.23	5,822.57		11,416.80
230 PSERS Retirement Contributions	16,687.06	17,368.17		34,055.23
250 Unemployment Compensation	3.46	3.60		7.06
260 Workers' Compensation	231.53	240.98		472.51
270 Group Insurance – Self-Insurance	7,935.13	8,259.02		16,194.15
291 Other Retirement Plans	1,528.55	1,590.94		3,119.49
Total Personnel Services – Employee Benefits	\$31,979.96	\$33,285.28		\$65,265.24
Total 2111 Supervision of Student Services – Head of Component	\$110,366.41	\$118,203.93		\$228,570.34

General Fund (10)

	<u>Elementary</u>	<u>Secondary</u>	<u>Federal</u>	<u>Total</u>
2120 Guidance Services				
100 Personnel Services – Salaries				
100 Personnel Services – Salaries	1,753,346.08	3,128,984.71		4,882,330.79
Total Personnel Services – Salaries	\$1,753,346.08	\$3,128,984.71		\$4,882,330.79
200 Personnel Services – Employee Benefits				
220 Social Security Contributions	129,072.81	229,191.38		358,264.19
230 PSERS Retirement Contributions	585,756.82	1,044,771.36		1,630,528.18
250 Unemployment Compensation	129.20	302.83		432.03
260 Workers' Compensation	9,011.60	20,287.48		29,299.08
270 Group Insurance – Self-Insurance	294,259.19	608,326.94		902,586.13
Total Personnel Services – Employee Benefits	\$1,018,229.62	\$1,902,879.99		\$2,921,109.61
300 Purchased Professional and Technical Services				
329 Professional Educational Services – Other		31,058.40		31,058.40
Total Purchased Professional and Technical Services		\$31,058.40		\$31,058.40
500 Other Purchased Services				
530 Communications		600.00		600.00
Total Other Purchased Services		\$600.00		\$600.00
600 Supplies				
610 General Supplies	7,617.94	11,529.24		19,147.18
Total Supplies	\$7,617.94	\$11,529.24		\$19,147.18
Total 2120 Guidance Services	\$2,779,193.64	\$5,075,052.34		\$7,854,245.98

General Fund (10)

2130 Attendance Services

Elementary

Secondary

Federal

Total

100 Personnel Services – Salaries

100 Personnel Services – Salaries

338,306.80

Total Personnel Services – Salaries

\$338,306.80

200 Personnel Services – Employee Benefits

220 Social Security Contributions

24,142.62

230 PSERS Retirement Contributions

112,213.36

250 Unemployment Compensation

81.41

260 Workers' Compensation

5,333.66

270 Group Insurance – Self-Insurance

161,293.08

Total Personnel Services – Employee Benefits

\$303,064.13

Total 2130 Attendance Services

\$641,370.93

General Fund (10)

	<u>Elementary</u>	<u>Secondary</u>	<u>Federal</u>	<u>Total</u>
2140 Psychological Services				
100 Personnel Services – Salaries				
100 Personnel Services – Salaries	939,347.42	401,633.26		1,340,980.68
Total Personnel Services – Salaries	\$939,347.42	\$401,633.26		\$1,340,980.68
200 Personnel Services – Employee Benefits				
220 Social Security Contributions	68,834.32	29,001.86		97,836.18
230 PSERS Retirement Contributions	313,374.22	134,213.30		447,587.52
250 Unemployment Compensation	77.47	31.74		109.21
260 Workers' Compensation	5,264.93	2,143.09		7,408.02
270 Group Insurance – Self-Insurance	163,164.92	73,313.63		236,478.55
Total Personnel Services – Employee Benefits	\$550,715.86	\$238,703.62		\$789,419.48
300 Purchased Professional and Technical Services				
330 Other Professional Services	5,775.00			5,775.00
Total Purchased Professional and Technical Services	\$5,775.00			\$5,775.00
500 Other Purchased Services				
580 Travel	790.95	338.19		1,129.14
Total Other Purchased Services	\$790.95	\$338.19		\$1,129.14
600 Supplies				
610 General Supplies	13,631.91	5,828.54		19,460.45
650 Supplies & Fees – Technology Related	8,573.68	3,665.81		12,239.49
Total Supplies	\$22,205.59	\$9,494.35		\$31,699.94
Total 2140 Psychological Services	\$1,518,834.82	\$650,169.42		\$2,169,004.24

General Fund (10)

	<u>Elementary</u>	<u>Secondary</u>	<u>Federal</u>	<u>Total</u>
2150 Speech Pathology and Audiology Services				
100 Personnel Services – Salaries				
100 Personnel Services – Salaries	1,181,190.68	275,421.79	33,561.93	1,490,174.40
Total Personnel Services – Salaries	\$1,181,190.68	\$275,421.79	\$33,561.93	\$1,490,174.40
200 Personnel Services – Employee Benefits				
220 Social Security Contributions	85,951.95	20,546.08	2,567.49	109,065.52
230 PSERS Retirement Contributions	409,429.40	92,038.64	9,737.89	511,205.93
250 Unemployment Compensation	120.18	31.57		151.75
260 Workers' Compensation	8,135.35	2,056.49		10,191.84
270 Group Insurance – Self-Insurance	256,268.33	53,740.62		310,008.95
Total Personnel Services – Employee Benefits	\$759,905.21	\$168,413.40	\$12,305.38	\$940,623.99
Total 2150 Speech Pathology and Audiology Services	\$1,941,095.89	\$443,835.19	\$45,867.31	\$2,430,798.39

General Fund (10)

	<u>Elementary</u>	<u>Secondary</u>	<u>Federal</u>	<u>Total</u>
2190 Other Student Services				
100 Personnel Services – Salaries				
100 Personnel Services – Salaries	128,607.59	133,856.88		262,464.47
Total Personnel Services – Salaries	\$128,607.59	\$133,856.88		\$262,464.47
200 Personnel Services – Employee Benefits				
220 Social Security Contributions	9,490.46	9,877.82		19,368.28
230 PSERS Retirement Contributions	42,922.88	44,674.83		87,597.71
250 Unemployment Compensation	13.47	14.02		27.49
260 Workers' Compensation	911.20	948.39		1,859.59
270 Group Insurance – Self-Insurance	23,805.40	24,777.05		48,582.45
291 Other Retirement Plans	1,716.13	1,786.17		3,502.30
Total Personnel Services – Employee Benefits	\$78,859.54	\$82,078.28		\$160,937.82
300 Purchased Professional and Technical Services				
330 Other Professional Services	29,991.94	26,991.75		56,983.69
Total Purchased Professional and Technical Services	\$29,991.94	\$26,991.75		\$56,983.69
400 Purchased Property Services				
430 Repairs and Maintenance Services	32.55	33.87		66.42
Total Purchased Property Services	\$32.55	\$33.87		\$66.42
600 Supplies				
610 General Supplies	721.80	666.28		1,388.08
630 Food	9.38	8.65		18.03
640 Books and Periodicals	102.43	94.56		196.99
650 Supplies & Fees – Technology Related	292.53	270.03		562.56
Total Supplies	\$1,126.14	\$1,039.52		\$2,165.66
Total 2190 Other Student Services	\$238,617.76	\$244,000.30		\$482,618.06

General Fund (10)

2200 Support Services – Instructional Staff

	<u>Elementary</u>	<u>Secondary</u>	<u>Federal</u>	<u>Total</u>
100 Personnel Services – Salaries				
100 Personnel Services – Salaries	4,016,883.10	3,217,557.58		7,234,440.68
Total Personnel Services – Salaries	\$4,016,883.10	\$3,217,557.58		\$7,234,440.68
200 Personnel Services – Employee Benefits				
220 Social Security Contributions	294,141.51	234,718.66		528,860.17
230 PSERS Retirement Contributions	1,325,809.72	1,055,190.43		2,381,000.15
240 Tuition Reimbursement	98,342.91	102,356.90		200,699.81
250 Unemployment Compensation	412.21	289.91		702.12
260 Workers' Compensation	27,653.84	19,684.84		47,338.68
270 Group Insurance – Self-Insurance	670,340.14	505,311.39		1,175,651.53
291 Other Retirement Plans	17,969.16	19,213.33		37,182.49
Total Personnel Services – Employee Benefits	\$2,434,669.49	\$1,936,765.46		\$4,371,434.95
300 Purchased Professional and Technical Services				
329 Professional Educational Services – Other	7,940.00	8,000.00	437.84	16,377.84
330 Other Professional Services		360.00		360.00
340 Technical Services	14,756.36	15,358.67		30,115.03
360 Employee Training and Development Services	1,359.75	1,555.25		2,915.00
Total Purchased Professional and Technical Services	\$24,056.11	\$25,273.92	\$437.84	\$49,767.87
400 Purchased Property Services				
430 Repairs and Maintenance Services	16,764.87	19,909.46		36,674.33
Total Purchased Property Services	\$16,764.87	\$19,909.46		\$36,674.33
500 Other Purchased Services				
530 Communications	29,342.66	30,540.31		59,882.97
580 Travel	16,321.20	21,421.75	30,163.91	67,906.86
Total Other Purchased Services	\$45,663.86	\$51,962.06	\$30,163.91	\$127,789.83
600 Supplies				
610 General Supplies	16,102.36	28,388.85		44,491.21
630 Food	2,828.94	4,026.24		6,855.18
640 Books and Periodicals	53,184.83	40,289.69		93,474.52
650 Supplies & Fees – Technology Related	115,646.08	220,135.96		335,782.04
Total Supplies	\$187,762.21	\$292,840.74		\$480,602.95
800 Other Objects				
810 Dues and Fees	717.34	7,408.08		8,125.42
Total Other Objects	\$717.34	\$7,408.08		\$8,125.42
Total 2200 Support Services – Instructional Staff	\$6,726,516.98	\$5,551,717.30	\$30,601.75	\$12,308,836.03

General Fund (10)

	<u>Elementary</u>	<u>Secondary</u>	<u>Federal</u>	<u>Total</u>
2220 Technology Support Services				
100 Personnel Services – Salaries				
100 Personnel Services – Salaries	64,351.80	82,514.44		146,866.24
Total Personnel Services – Salaries	\$64,351.80	\$82,514.44		\$146,866.24
200 Personnel Services – Employee Benefits				
220 Social Security Contributions	4,481.64	5,809.58		10,291.22
230 PSERS Retirement Contributions	21,491.40	27,561.37		49,052.77
250 Unemployment Compensation	4.61	5.91		10.52
260 Workers' Compensation	310.52	398.15		708.67
270 Group Insurance – Self-Insurance	10,643.55	13,647.58		24,291.13
291 Other Retirement Plans	1,003.03	1,286.12		2,289.15
Total Personnel Services – Employee Benefits	\$37,934.75	\$48,708.71		\$86,643.46
600 Supplies				
610 General Supplies	4,365.59	11,796.13		16,161.72
Total Supplies	\$4,365.59	\$11,796.13		\$16,161.72
Total 2220 Technology Support Services	\$106,652.14	\$143,019.28		\$249,671.42

General Fund (10)

2240 Computer-Assisted Instruction Support Services

	<u>Elementary</u>	<u>Secondary</u>	<u>Federal</u>	<u>Total</u>
100 Personnel Services – Salaries				
100 Personnel Services – Salaries	611,459.70	639,757.26		1,251,216.96
Total Personnel Services – Salaries	\$611,459.70	\$639,757.26		\$1,251,216.96
200 Personnel Services – Employee Benefits				
220 Social Security Contributions	45,318.50	47,423.76		92,742.26
230 PSERS Retirement Contributions	198,187.55	206,276.83		404,464.38
250 Unemployment Compensation	84.28	87.72		172.00
260 Workers' Compensation	5,801.22	6,070.18		11,871.40
270 Group Insurance – Self-Insurance	132,007.42	137,395.48		269,402.90
291 Other Retirement Plans	1,839.33	1,914.41		3,753.74
Total Personnel Services – Employee Benefits	\$383,238.30	\$399,168.38		\$782,406.68
300 Purchased Professional and Technical Services				
340 Technical Services	8,876.36	9,238.67		18,115.03
Total Purchased Professional and Technical Services	\$8,876.36	\$9,238.67		\$18,115.03
400 Purchased Property Services				
430 Repairs and Maintenance Services	16,530.68	19,665.72		36,196.40
Total Purchased Property Services	\$16,530.68	\$19,665.72		\$36,196.40
500 Other Purchased Services				
530 Communications	29,342.66	30,540.31		59,882.97
580 Travel	12,700.95	13,219.36		25,920.31
Total Other Purchased Services	\$42,043.61	\$43,759.67		\$85,803.28
600 Supplies				
610 General Supplies	7,142.27	11,937.61		19,079.88
650 Supplies & Fees – Technology Related	48,643.20	149,688.72		198,331.92
Total Supplies	\$55,785.47	\$161,626.33		\$217,411.80
Total 2240 Computer-Assisted Instruction Support Services	\$1,117,934.12	\$1,273,216.03		\$2,391,150.15

General Fund (10)

	<u>Elementary</u>	<u>Secondary</u>	<u>Federal</u>	<u>Total</u>
2250 School Library Services				
100 Personnel Services – Salaries				
100 Personnel Services – Salaries	1,807,300.01	824,238.90		2,631,538.91
Total Personnel Services – Salaries	\$1,807,300.01	\$824,238.90		\$2,631,538.91
200 Personnel Services – Employee Benefits				
220 Social Security Contributions	134,570.19	61,125.49		195,695.68
230 PSERS Retirement Contributions	608,060.62	275,535.06		883,595.68
250 Unemployment Compensation	221.89	89.53		311.42
260 Workers' Compensation	14,680.10	6,051.28		20,731.38
270 Group Insurance – Self-Insurance	328,745.38	146,022.12		474,767.50
Total Personnel Services – Employee Benefits	\$1,086,278.18	\$488,823.48		\$1,575,101.66
600 Supplies				
610 General Supplies	3,035.81	2,616.83		5,652.64
640 Books and Periodicals	51,889.64	39,094.13		90,983.77
650 Supplies & Fees – Technology Related		18,687.45		18,687.45
Total Supplies	\$54,925.45	\$60,398.41		\$115,323.86
800 Other Objects				
810 Dues and Fees		6,971.45		6,971.45
Total Other Objects		\$6,971.45		\$6,971.45
Total 2250 School Library Services	\$2,948,503.64	\$1,380,432.24		\$4,328,935.88

General Fund (10)

2260 Instruction and Curriculum Development Services	<u>Elementary</u>	<u>Secondary</u>	<u>Federal</u>	<u>Total</u>
100 Personnel Services – Salaries				
100 Personnel Services – Salaries	717,005.17	825,710.86		1,542,716.03
Total Personnel Services – Salaries	\$717,005.17	\$825,710.86		\$1,542,716.03
200 Personnel Services – Employee Benefits				
220 Social Security Contributions	50,544.30	59,195.16		109,739.46
230 PSERS Retirement Contributions	231,790.37	270,918.94		502,709.31
250 Unemployment Compensation	46.44	49.53		95.97
260 Workers' Compensation	3,188.21	3,341.49		6,529.70
270 Group Insurance – Self-Insurance	108,703.98	114,323.14		223,027.12
291 Other Retirement Plans	6,317.02	6,843.43		13,160.45
Total Personnel Services – Employee Benefits	\$400,590.32	\$454,671.69		\$855,262.01
300 Purchased Professional and Technical Services				
329 Professional Educational Services – Other	1,475.00	8,000.00		9,475.00
Total Purchased Professional and Technical Services	\$1,475.00	\$8,000.00		\$9,475.00
500 Other Purchased Services				
580 Travel	494.53	5,887.50		6,382.03
Total Other Purchased Services	\$494.53	\$5,887.50		\$6,382.03
600 Supplies				
610 General Supplies		618.86		618.86
630 Food	78.13	1,487.03		1,565.16
650 Supplies & Fees – Technology Related	67,002.88	51,759.79		118,762.67
Total Supplies	\$67,081.01	\$53,865.68		\$120,946.69
800 Other Objects				
810 Dues and Fees	448.00	188.00		636.00
Total Other Objects	\$448.00	\$188.00		\$636.00
Total 2260 Instruction and Curriculum Development Services	\$1,187,094.03	\$1,348,323.73		\$2,535,417.76

General Fund (10)

	<u>Elementary</u>	<u>Secondary</u>	<u>Federal</u>	<u>Total</u>
2270 Instructional Staff Professional Development Services				
100 Personnel Services – Salaries				
100 Personnel Services – Salaries	291,522.83	298,654.01		590,176.84
Total Personnel Services – Salaries	\$291,522.83	\$298,654.01		\$590,176.84
200 Personnel Services – Employee Benefits				
220 Social Security Contributions	21,789.94	22,199.69		43,989.63
230 PSERS Retirement Contributions	96,541.62	98,231.99		194,773.61
240 Tuition Reimbursement	98,342.91	102,356.90		200,699.81
250 Unemployment Compensation	17.30	18.00		35.30
260 Workers' Compensation	1,157.65	1,204.90		2,362.55
270 Group Insurance – Self-Insurance	15,870.27	16,518.03		32,388.30
Total Personnel Services – Employee Benefits	\$233,719.69	\$240,529.51		\$474,249.20
300 Purchased Professional and Technical Services				
329 Professional Educational Services – Other	6,465.00		437.84	6,902.84
330 Other Professional Services		360.00		360.00
340 Technical Services	5,880.00	6,120.00		12,000.00
360 Employee Training and Development Services	1,359.75	1,555.25		2,915.00
Total Purchased Professional and Technical Services	\$13,704.75	\$8,035.25	\$437.84	\$22,177.84
400 Purchased Property Services				
430 Repairs and Maintenance Services	234.19	243.74		477.93
Total Purchased Property Services	\$234.19	\$243.74		\$477.93
500 Other Purchased Services				
580 Travel	3,125.72	2,314.89	30,163.91	35,604.52
Total Other Purchased Services	\$3,125.72	\$2,314.89	\$30,163.91	\$35,604.52
600 Supplies				
610 General Supplies	1,558.69	1,419.42		2,978.11
630 Food	2,750.81	2,539.21		5,290.02
640 Books and Periodicals	1,295.19	1,195.56		2,490.75
Total Supplies	\$5,604.69	\$5,154.19		\$10,758.88
800 Other Objects				
810 Dues and Fees	269.34	248.63		517.97
Total Other Objects	\$269.34	\$248.63		\$517.97
Total 2270 Instructional Staff Professional Development Services	\$548,181.21	\$555,180.22	\$30,601.75	\$1,133,963.18

General Fund (10)

	<u>Elementary</u>	<u>Secondary</u>	<u>Federal</u>	<u>Total</u>
2290 Other Instructional Staff Services				
100 Personnel Services – Salaries				
100 Personnel Services – Salaries	525,243.59	546,682.11		1,071,925.70
Total Personnel Services – Salaries	\$525,243.59	\$546,682.11		\$1,071,925.70
200 Personnel Services – Employee Benefits				
220 Social Security Contributions	37,436.94	38,964.98		76,401.92
230 PSERS Retirement Contributions	169,738.16	176,666.24		346,404.40
250 Unemployment Compensation	37.69	39.22		76.91
260 Workers' Compensation	2,516.14	2,618.84		5,134.98
270 Group Insurance – Self-Insurance	74,369.54	77,405.04		151,774.58
291 Other Retirement Plans	8,809.78	9,169.37		17,979.15
Total Personnel Services – Employee Benefits	\$292,908.25	\$304,863.69		\$597,771.94
Total 2290 Other Instructional Staff Services	\$818,151.84	\$851,545.80		\$1,669,697.64

General Fund (10)

	<u>Elementary</u>	<u>Secondary</u>	<u>Federal</u>	<u>Total</u>
2300 Support Services – Administration				
100 Personnel Services – Salaries				
100 Personnel Services – Salaries	3,567,049.74	3,635,734.02		8,331,863.81
Total Personnel Services – Salaries	\$3,567,049.74	\$3,635,734.02		\$8,331,863.81
200 Personnel Services – Employee Benefits				
220 Social Security Contributions	254,334.16	261,248.44		590,399.08
230 PSERS Retirement Contributions	1,191,178.69	1,203,010.23		2,698,094.89
250 Unemployment Compensation	289.46	270.53		607.03
260 Workers' Compensation	19,389.00	18,046.73		41,022.32
270 Group Insurance – Self-Insurance	590,272.76	550,438.47		1,203,531.78
291 Other Retirement Plans	52,938.16	59,691.03		134,081.85
Total Personnel Services – Employee Benefits	\$2,108,402.23	\$2,092,705.43		\$4,667,736.95
300 Purchased Professional and Technical Services				
310 Official / Administrative Services				788,621.33
330 Other Professional Services		9,357.45		319,978.40
340 Technical Services				40,557.84
Total Purchased Professional and Technical Services		\$9,357.45		\$1,149,157.57
400 Purchased Property Services				
430 Repairs and Maintenance Services		1,357.68		1,752.68
440 Rentals				21,840.20
Total Purchased Property Services		\$1,357.68		\$23,592.88
500 Other Purchased Services				
520 Insurance – General				206,567.50
530 Communications	3,907.37	8,478.92		22,064.38
549 Other Advertising/Public Relations				2,104.18
550 Printing and Binding				9,650.00
580 Travel	3,877.82	14,338.01		58,856.57
Total Other Purchased Services	\$7,785.19	\$22,816.93		\$299,242.63
600 Supplies				
610 General Supplies	33,898.14	115,006.02		195,249.15
630 Food	1,454.37	12,175.13		49,766.25
640 Books and Periodicals		982.40		6,295.98
Total Supplies	\$35,352.51	\$128,163.55		\$251,311.38
800 Other Objects				
810 Dues and Fees	9,707.25	10,490.93		38,742.33
820 Claims and Judgments Against the LEA				23,250.00
Total Other Objects	\$9,707.25	\$10,490.93		\$61,992.33
Total 2300 Support Services – Administration	\$5,728,296.92	\$5,900,625.99		\$14,784,897.55

General Fund (10)

2310 Board Services

Elementary

Secondary

Federal

Total

500 Other Purchased Services

520 Insurance – General

206,567.50

549 Other Advertising/Public Relations

623.68

Total Other Purchased Services

\$207,191.18

800 Other Objects

810 Dues and Fees

16,384.15

820 Claims and Judgments Against the LEA

23,250.00

Total Other Objects

\$39,634.15

Total 2310 Board Services

\$246,825.33

General Fund (10)

	<u>Elementary</u>	<u>Secondary</u>	<u>Federal</u>	<u>Total</u>
2330 Tax Assessment and Collection Services				
100 Personnel Services – Salaries				
100 Personnel Services – Salaries				167,398.00
Total Personnel Services – Salaries				\$167,398.00
200 Personnel Services – Employee Benefits				
220 Social Security Contributions				12,805.91
250 Unemployment Compensation				1.50
Total Personnel Services – Employee Benefits				\$12,807.41
300 Purchased Professional and Technical Services				
310 Official / Administrative Services				788,621.33
Total Purchased Professional and Technical Services				\$788,621.33
500 Other Purchased Services				
530 Communications				6,032.69
Total Other Purchased Services				\$6,032.69
Total 2330 Tax Assessment and Collection Services				\$974,859.43

General Fund (10)

2340 Staff Relations and Negotiations Services

Elementary

Secondary

Federal

Total

300 Purchased Professional and Technical Services

330 Other Professional Services

52,245.96

Total Purchased Professional and Technical Services

\$52,245.96

500 Other Purchased Services

549 Other Advertising/Public Relations

999.00

580 Travel

453.98

Total Other Purchased Services

\$1,452.98

600 Supplies

610 General Supplies

1,806.99

Total Supplies

\$1,806.99

Total 2340 Staff Relations and Negotiations Services

\$55,505.93

General Fund (10)

2350 Legal and Accounting Services

Elementary

Secondary

Federal

Total

300 Purchased Professional and Technical Services

330 Other Professional Services

174,041.99

Total Purchased Professional and Technical Services

\$174,041.99

Total 2350 Legal and Accounting Services

\$174,041.99

General Fund (10)

	<u>Elementary</u>	<u>Secondary</u>	<u>Federal</u>	<u>Total</u>
2360 Office of the Superintendent / Executive Director Services				
100 Personnel Services – Salaries				
100 Personnel Services – Salaries				885,503.06
Total Personnel Services – Salaries				\$885,503.06
200 Personnel Services – Employee Benefits				
220 Social Security Contributions				56,308.90
230 PSERS Retirement Contributions				279,048.41
250 Unemployment Compensation				38.92
260 Workers' Compensation				2,913.67
270 Group Insurance – Self-Insurance				50,164.99
291 Other Retirement Plans				20,024.05
Total Personnel Services – Employee Benefits				\$408,498.94
300 Purchased Professional and Technical Services				
330 Other Professional Services				42,000.00
Total Purchased Professional and Technical Services				\$42,000.00
500 Other Purchased Services				
530 Communications	1,284.47	1,336.88		2,621.35
580 Travel				28,974.88
Total Other Purchased Services	\$1,284.47	\$1,336.88		\$31,596.23
600 Supplies				
610 General Supplies				13,296.27
630 Food				22,704.09
640 Books and Periodicals				4,008.50
Total Supplies				\$40,008.86
800 Other Objects				
810 Dues and Fees				20.00
Total Other Objects				\$20.00
Total 2360 Office of the Superintendent / Executive Director Services	\$1,284.47	\$1,336.88		\$1,407,627.09

General Fund (10)

2370 Community Relations Services

Elementary

Secondary

Federal

Total

100 Personnel Services – Salaries

100 Personnel Services – Salaries

71,307.69

Total Personnel Services – Salaries

\$71,307.69

200 Personnel Services – Employee Benefits

220 Social Security Contributions

5,329.03

230 PSERS Retirement Contributions

23,838.23

250 Unemployment Compensation

5.56

260 Workers' Compensation

411.61

270 Group Insurance – Self-Insurance

12,655.56

291 Other Retirement Plans

1,428.61

Total Personnel Services – Employee Benefits

\$43,668.60

300 Purchased Professional and Technical Services

340 Technical Services

40,557.84

Total Purchased Professional and Technical Services

\$40,557.84

500 Other Purchased Services

550 Printing and Binding

9,650.00

Total Other Purchased Services

\$9,650.00

600 Supplies

610 General Supplies

22,592.58

Total Supplies

\$22,592.58

800 Other Objects

810 Dues and Fees

1,345.00

Total Other Objects

\$1,345.00

Total 2370 Community Relations Services

\$189,121.71

General Fund (10)

	<u>Elementary</u>	<u>Secondary</u>	<u>Federal</u>	<u>Total</u>
2380 Office of the Principal Services				
100 Personnel Services – Salaries				
100 Personnel Services – Salaries	3,567,049.74	3,635,734.02		7,202,783.76
Total Personnel Services – Salaries	\$3,567,049.74	\$3,635,734.02		\$7,202,783.76
200 Personnel Services – Employee Benefits				
220 Social Security Contributions	254,334.16	261,248.44		515,582.60
230 PSERS Retirement Contributions	1,191,178.69	1,203,010.23		2,394,188.92
250 Unemployment Compensation	289.46	270.53		559.99
260 Workers' Compensation	19,389.00	18,046.73		37,435.73
270 Group Insurance – Self-Insurance	590,272.76	550,438.47		1,140,711.23
291 Other Retirement Plans	52,938.16	59,691.03		112,629.19
Total Personnel Services – Employee Benefits	\$2,108,402.23	\$2,092,705.43		\$4,201,107.66
300 Purchased Professional and Technical Services				
330 Other Professional Services		9,357.45		9,357.45
Total Purchased Professional and Technical Services		\$9,357.45		\$9,357.45
400 Purchased Property Services				
430 Repairs and Maintenance Services		1,357.68		1,357.68
Total Purchased Property Services		\$1,357.68		\$1,357.68
500 Other Purchased Services				
530 Communications	2,622.90	7,142.04		9,764.94
580 Travel	3,877.82	14,338.01		18,215.83
Total Other Purchased Services	\$6,500.72	\$21,480.05		\$27,980.77
600 Supplies				
610 General Supplies	33,898.14	115,006.02		148,904.16
630 Food	1,454.37	12,175.13		13,629.50
640 Books and Periodicals		982.40		982.40
Total Supplies	\$35,352.51	\$128,163.55		\$163,516.06
800 Other Objects				
810 Dues and Fees	9,707.25	10,490.93		20,198.18
Total Other Objects	\$9,707.25	\$10,490.93		\$20,198.18
Total 2380 Office of the Principal Services	\$5,727,012.45	\$5,899,289.11		\$11,626,301.56

General Fund (10)

	<u>Elementary</u>	<u>Secondary</u>	<u>Federal</u>	<u>Total</u>
2390 Other Administration Services				
100 Personnel Services – Salaries				
100 Personnel Services – Salaries				4,871.30
Total Personnel Services – Salaries				\$4,871.30
200 Personnel Services – Employee Benefits				
220 Social Security Contributions				372.64
230 PSERS Retirement Contributions				1,019.33
250 Unemployment Compensation				1.06
260 Workers' Compensation				261.31
Total Personnel Services – Employee Benefits				\$1,654.34
300 Purchased Professional and Technical Services				
330 Other Professional Services				42,333.00
Total Purchased Professional and Technical Services				\$42,333.00
400 Purchased Property Services				
430 Repairs and Maintenance Services				395.00
440 Rentals				21,840.20
Total Purchased Property Services				\$22,235.20
500 Other Purchased Services				
530 Communications				3,645.40
549 Other Advertising/Public Relations				481.50
580 Travel				11,211.88
Total Other Purchased Services				\$15,338.78
600 Supplies				
610 General Supplies				8,649.15
630 Food				13,432.66
640 Books and Periodicals				1,305.08
Total Supplies				\$23,386.89
800 Other Objects				
810 Dues and Fees				795.00
Total Other Objects				\$795.00
Total 2390 Other Administration Services				\$110,614.51

General Fund (10)

	<u>Elementary</u>	<u>Secondary</u>	<u>Federal</u>	<u>Total</u>
2400 Support Services – Pupil Health				
100 Personnel Services – Salaries				
100 Personnel Services – Salaries			23,988.15	2,552,490.88
Total Personnel Services – Salaries			\$23,988.15	\$2,552,490.88
200 Personnel Services – Employee Benefits				
220 Social Security Contributions			1,835.10	187,621.74
230 PSERS Retirement Contributions			6,737.08	831,964.13
250 Unemployment Compensation				409.82
260 Workers' Compensation				27,466.04
270 Group Insurance – Self-Insurance				516,413.19
Total Personnel Services – Employee Benefits			\$8,572.18	\$1,563,874.92
300 Purchased Professional and Technical Services				
329 Professional Educational Services – Other				1,312.50
330 Other Professional Services				52,220.00
Total Purchased Professional and Technical Services				\$53,532.50
500 Other Purchased Services				
580 Travel				871.11
Total Other Purchased Services				\$871.11
600 Supplies				
610 General Supplies				75,868.88
640 Books and Periodicals				127.39
Total Supplies				\$75,996.27
800 Other Objects				
810 Dues and Fees				705.00
Total Other Objects				\$705.00
Total 2400 Support Services – Pupil Health			\$32,560.33	\$4,247,470.68

General Fund (10)

2440 Nursing Services

	<u>Elementary</u>	<u>Secondary</u>	<u>Federal</u>	<u>Total</u>
100 Personnel Services – Salaries				
100 Personnel Services – Salaries			23,988.15	2,476,943.55
Total Personnel Services – Salaries			\$23,988.15	\$2,476,943.55
200 Personnel Services – Employee Benefits				
220 Social Security Contributions			1,835.10	182,022.02
230 PSERS Retirement Contributions			6,737.08	806,715.20
250 Unemployment Compensation				403.68
260 Workers' Compensation				27,041.05
270 Group Insurance – Self-Insurance				505,077.07
Total Personnel Services – Employee Benefits			\$8,572.18	\$1,521,259.02
300 Purchased Professional and Technical Services				
329 Professional Educational Services – Other				1,312.50
330 Other Professional Services				52,220.00
Total Purchased Professional and Technical Services				\$53,532.50
500 Other Purchased Services				
580 Travel				871.11
Total Other Purchased Services				\$871.11
600 Supplies				
610 General Supplies				75,868.88
640 Books and Periodicals				127.39
Total Supplies				\$75,996.27
800 Other Objects				
810 Dues and Fees				705.00
Total Other Objects				\$705.00
Total 2440 Nursing Services			\$32,560.33	\$4,129,307.45

General Fund (10)

	<u>Elementary</u>	<u>Secondary</u>	<u>Federal</u>	<u>Total</u>
2450 Nonpublic Health Services				
100 Personnel Services – Salaries				
100 Personnel Services – Salaries				75,547.33
Total Personnel Services – Salaries				\$75,547.33
200 Personnel Services – Employee Benefits				
220 Social Security Contributions				5,599.72
230 PSERS Retirement Contributions				25,248.93
250 Unemployment Compensation				6.14
260 Workers' Compensation				424.99
270 Group Insurance – Self-Insurance				11,336.12
Total Personnel Services – Employee Benefits				\$42,615.90
Total 2450 Nonpublic Health Services				\$118,163.23

General Fund (10)

2500 Support Services – Business

Elementary Secondary Federal Total

100 Personnel Services – Salaries

100 Personnel Services – Salaries 1,236,123.81

Total Personnel Services – Salaries \$1,236,123.81

200 Personnel Services – Employee Benefits

220 Social Security Contributions 80,245.14

230 PSERS Retirement Contributions 380,128.52

250 Unemployment Compensation 91.78

260 Workers' Compensation 6,142.63

270 Group Insurance – Self-Insurance 180,392.10

291 Other Retirement Plans 16,094.86

Total Personnel Services – Employee Benefits \$663,095.03

300 Purchased Professional and Technical Services

330 Other Professional Services 27,447.04

Total Purchased Professional and Technical Services \$27,447.04

400 Purchased Property Services

430 Repairs and Maintenance Services 8,708.18

Total Purchased Property Services \$8,708.18

500 Other Purchased Services

530 Communications 2,023.32

549 Other Advertising/Public Relations 12,743.11

580 Travel 4,210.59

Total Other Purchased Services \$18,977.02

600 Supplies

610 General Supplies 24,781.42

630 Food 3,216.70

Total Supplies \$27,998.12

800 Other Objects

810 Dues and Fees 2,928.00

Total Other Objects \$2,928.00

Total 2500 Support Services – Business \$1,985,277.20

General Fund (10)

2510 Fiscal Services

Elementary Secondary Federal Total

100	<u>Personnel Services – Salaries</u>			
	100 Personnel Services – Salaries			1,236,123.81
Total Personnel Services – Salaries				\$1,236,123.81
200	<u>Personnel Services – Employee Benefits</u>			
	220 Social Security Contributions			80,245.14
	230 PSERS Retirement Contributions			380,128.52
	250 Unemployment Compensation			91.78
	260 Workers' Compensation			6,142.63
	270 Group Insurance – Self-Insurance			180,392.10
	291 Other Retirement Plans			16,094.86
Total Personnel Services – Employee Benefits				\$663,095.03
300	<u>Purchased Professional and Technical Services</u>			
	330 Other Professional Services			27,447.04
Total Purchased Professional and Technical Services				\$27,447.04
400	<u>Purchased Property Services</u>			
	430 Repairs and Maintenance Services			8,708.18
Total Purchased Property Services				\$8,708.18
500	<u>Other Purchased Services</u>			
	530 Communications			2,023.32
	549 Other Advertising/Public Relations			12,743.11
	580 Travel			4,210.59
Total Other Purchased Services				\$18,977.02
600	<u>Supplies</u>			
	610 General Supplies			24,781.42
	630 Food			3,216.70
Total Supplies				\$27,998.12
800	<u>Other Objects</u>			
	810 Dues and Fees			2,928.00
Total Other Objects				\$2,928.00
Total 2510 Fiscal Services				\$1,985,277.20

General Fund (10)

2511 Supervision of Fiscal Services - Head of Component

Elementary

Secondary

Federal

Total

100 Personnel Services – Salaries

100 Personnel Services – Salaries

227,343.83

Total Personnel Services – Salaries

\$227,343.83

200 Personnel Services – Employee Benefits

220 Social Security Contributions

10,577.34

230 PSERS Retirement Contributions

65,824.29

250 Unemployment Compensation

7.06

260 Workers' Compensation

472.51

270 Group Insurance – Self-Insurance

16,194.15

291 Other Retirement Plans

5,469.47

Total Personnel Services – Employee Benefits

\$98,544.82

Total 2511 Supervision of Fiscal Services - Head of Component

\$325,888.65

General Fund (10)

	<u>Elementary</u>	<u>Secondary</u>	<u>Federal</u>	<u>Total</u>
2515 Financial Accounting Services				
100 Personnel Services – Salaries				
100 Personnel Services – Salaries				1,008,779.98
Total Personnel Services – Salaries				\$1,008,779.98
200 Personnel Services – Employee Benefits				
220 Social Security Contributions				69,667.80
230 PSERS Retirement Contributions				314,304.23
250 Unemployment Compensation				84.72
260 Workers' Compensation				5,670.12
270 Group Insurance – Self-Insurance				164,197.95
291 Other Retirement Plans				10,625.39
Total Personnel Services – Employee Benefits				\$564,550.21
300 Purchased Professional and Technical Services				
330 Other Professional Services				27,447.04
Total Purchased Professional and Technical Services				\$27,447.04
400 Purchased Property Services				
430 Repairs and Maintenance Services				8,708.18
Total Purchased Property Services				\$8,708.18
500 Other Purchased Services				
530 Communications				2,023.32
549 Other Advertising/Public Relations				12,743.11
580 Travel				4,210.59
Total Other Purchased Services				\$18,977.02
600 Supplies				
610 General Supplies				24,781.42
630 Food				3,216.70
Total Supplies				\$27,998.12
800 Other Objects				
810 Dues and Fees				2,928.00
Total Other Objects				\$2,928.00
Total 2515 Financial Accounting Services				\$1,659,388.55

General Fund (10)

2600 Operation and Maintenance of Plant Services

Elementary

Secondary

Federal

Total

100 Personnel Services – Salaries

100 Personnel Services – Salaries

9,960,255.33

Total Personnel Services – Salaries

\$9,960,255.33

200 Personnel Services – Employee Benefits

220 Social Security Contributions

774,921.45

230 PSERS Retirement Contributions

3,390,938.59

250 Unemployment Compensation

4,036.63

260 Workers' Compensation

99,288.20

270 Group Insurance – Self-Insurance

2,968,036.94

291 Other Retirement Plans

9,511.58

Total Personnel Services – Employee Benefits

\$7,246,733.39

300 Purchased Professional and Technical Services

330 Other Professional Services

32,718.68

340 Technical Services

107,607.00

Total Purchased Professional and Technical Services

\$140,325.68

400 Purchased Property Services

410 Cleaning Services

529,302.17

420 Utility Services

426,104.57

430 Repairs and Maintenance Services

1,161,912.22

440 Rentals

21,339.70

460 Extermination Services

27,040.00

490 Other Purchased Property Services

299,653.63

Total Purchased Property Services

\$2,465,352.29

500 Other Purchased Services

521 Fire Insurance

529,618.00

523 General Property and Liability Insurance

80,818.00

529 Other Insurance

53,754.00

530 Communications

1,292.51

580 Travel

20,393.49

Total Other Purchased Services

\$685,876.00

600 Supplies

610 General Supplies

767,609.65

798,940.65

1,566,550.30

620 Energy

2,954,488.15

630 Food

1,780.97

650 Supplies & Fees – Technology Related

14,393.83

Total Supplies

\$767,609.65

\$798,940.65

\$4,537,213.25

700 Property

752 Capital Equipment – Original and Additional

46,068.00

762 Capitalized Equipment - Replacement

106,884.76

Total Property

\$152,952.76

800 Other Objects

General Fund (10)

2600 Operation and Maintenance of Plant Services

Elementary

Secondary

Federal

Total

800 Other Objects

810 Dues and Fees

4,472.18

Total Other Objects

\$4,472.18

Total 2600 Operation and Maintenance of Plant Services

\$767,609.65

\$798,940.65

\$25,193,180.88

General Fund (10)

2610 Supervision of Operation and Maintenance of Plant Services	<u>Elementary</u>	<u>Secondary</u>	<u>Federal</u>	<u>Total</u>
100 Personnel Services – Salaries				
100 Personnel Services – Salaries				144,900.00
Total Personnel Services – Salaries				\$144,900.00
200 Personnel Services – Employee Benefits				
220 Social Security Contributions				10,227.96
230 PSERS Retirement Contributions				48,390.71
250 Unemployment Compensation				7.06
260 Workers' Compensation				472.51
291 Other Retirement Plans				2,906.64
Total Personnel Services – Employee Benefits				\$62,004.88
Total 2610 Supervision of Operation and Maintenance of Plant Services				\$206,904.88

General Fund (10)

	<u>Elementary</u>	<u>Secondary</u>	<u>Federal</u>	<u>Total</u>
2611 Supervision of Operation and Maintenance of Plant Services – Head of Component				
100 Personnel Services – Salaries				
100 Personnel Services – Salaries				144,900.00
Total Personnel Services – Salaries				\$144,900.00
200 Personnel Services – Employee Benefits				
220 Social Security Contributions				10,227.96
230 PSERS Retirement Contributions				48,390.71
250 Unemployment Compensation				7.06
260 Workers' Compensation				472.51
291 Other Retirement Plans				2,906.64
Total Personnel Services – Employee Benefits				\$62,004.88
Total 2611 Supervision of Operation and Maintenance of Plant Services – Head of Component				\$206,904.88

General Fund (10)

	<u>Elementary</u>	<u>Secondary</u>	<u>Federal</u>	<u>Total</u>
2620 Operation of Buildings Services				
100 Personnel Services – Salaries				
100 Personnel Services – Salaries				9,815,355.33
Total Personnel Services – Salaries				\$9,815,355.33
200 Personnel Services – Employee Benefits				
220 Social Security Contributions				764,693.49
230 PSERS Retirement Contributions				3,342,547.88
250 Unemployment Compensation				4,029.57
260 Workers' Compensation				98,815.69
270 Group Insurance – Self-Insurance				2,968,036.94
291 Other Retirement Plans				6,604.94
Total Personnel Services – Employee Benefits				\$7,184,728.51
300 Purchased Professional and Technical Services				
330 Other Professional Services				32,718.68
340 Technical Services				107,607.00
Total Purchased Professional and Technical Services				\$140,325.68
400 Purchased Property Services				
410 Cleaning Services				529,302.17
420 Utility Services				426,104.57
430 Repairs and Maintenance Services				1,161,912.22
440 Rentals				21,339.70
460 Extermination Services				27,040.00
490 Other Purchased Property Services				299,653.63
Total Purchased Property Services				\$2,465,352.29
500 Other Purchased Services				
521 Fire Insurance				529,618.00
523 General Property and Liability Insurance				80,818.00
529 Other Insurance				53,754.00
530 Communications				1,292.51
580 Travel				20,393.49
Total Other Purchased Services				\$685,876.00
600 Supplies				
610 General Supplies	767,609.65	798,940.65		1,566,550.30
620 Energy				2,954,488.15
630 Food				1,780.97
650 Supplies & Fees – Technology Related				14,393.83
Total Supplies				\$4,537,213.25
700 Property				
752 Capital Equipment – Original and Additional				46,068.00
762 Capitalized Equipment - Replacement				106,884.76
Total Property				\$152,952.76
800 Other Objects				

LEA : 122092102 Central Bucks SD

Printed 11/4/2019 3:21:55 PM

General Fund (10)

2620 Operation of Buildings Services

Elementary

Secondary

Federal

Total

800 Other Objects

810 Dues and Fees

4,472.18

Total Other Objects

\$4,472.18

Total 2620 Operation of Buildings Services

\$767,609.65

\$798,940.65

\$24,986,276.00

General Fund (10)

	<u>Elementary</u>	<u>Secondary</u>	<u>Federal</u>	<u>Total</u>
2700 Student Transportation Services				
100 Personnel Services – Salaries				
100 Personnel Services – Salaries				5,839,703.89
Total Personnel Services – Salaries				\$5,839,703.89
200 Personnel Services – Employee Benefits				
220 Social Security Contributions				429,269.05
230 PSERS Retirement Contributions				1,899,668.53
250 Unemployment Compensation				1,377.68
260 Workers' Compensation				93,735.70
270 Group Insurance – Self-Insurance				1,892,291.29
291 Other Retirement Plans				2,550.45
Total Personnel Services – Employee Benefits				\$4,318,892.70
300 Purchased Professional and Technical Services				
330 Other Professional Services				11,241.75
Total Purchased Professional and Technical Services				\$11,241.75
400 Purchased Property Services				
410 Cleaning Services				4,076.38
420 Utility Services				9,203.18
430 Repairs and Maintenance Services				86,222.03
440 Rentals				8,268.10
Total Purchased Property Services				\$107,769.69
500 Other Purchased Services				
511 Student Transportation Services from Another LEA Within the State				175,055.51
513 Contracted Carriers				8,081,576.18
516 Student Transportation Services From the IU				475,668.19
522 Automotive Liability Insurance				200,407.00
530 Communications				44,108.53
580 Travel				7,479.19
Total Other Purchased Services				\$8,984,294.60
600 Supplies				
610 General Supplies				404,626.49
620 Energy				446,607.75
630 Food				430.40
650 Supplies & Fees – Technology Related				139,792.89
Total Supplies				\$991,457.53
800 Other Objects				
810 Dues and Fees				436.00
Total Other Objects				\$436.00
Total 2700 Student Transportation Services				\$20,253,796.16

General Fund (10)

2710 Supervision of Student Transportation Services

Elementary

Secondary

Federal

Total

100 Personnel Services – Salaries

100 Personnel Services – Salaries

84,807.69

Total Personnel Services – Salaries

\$84,807.69

200 Personnel Services – Employee Benefits

220 Social Security Contributions

6,207.03

230 PSERS Retirement Contributions

28,351.17

250 Unemployment Compensation

7.06

260 Workers' Compensation

472.51

270 Group Insurance – Self-Insurance

15,014.62

291 Other Retirement Plans

850.47

Total Personnel Services – Employee Benefits

\$50,902.86

Total 2710 Supervision of Student Transportation Services

\$135,710.55

General Fund (10)

	<u>Elementary</u>	<u>Secondary</u>	<u>Federal</u>	<u>Total</u>
2711 Supervision of Student Transportation Services – Head of Component				
100 Personnel Services – Salaries				
100 Personnel Services – Salaries				84,807.69
Total Personnel Services – Salaries				\$84,807.69
200 Personnel Services – Employee Benefits				
220 Social Security Contributions				6,207.03
230 PSERS Retirement Contributions				28,351.17
250 Unemployment Compensation				7.06
260 Workers' Compensation				472.51
270 Group Insurance – Self-Insurance				15,014.62
291 Other Retirement Plans				850.47
Total Personnel Services – Employee Benefits				\$50,902.86
Total 2711 Supervision of Student Transportation Services – Head of Component				\$135,710.55

General Fund (10)

2720 Vehicle Operation Services

Elementary Secondary Federal Total

100 Personnel Services – Salaries

100 Personnel Services – Salaries 5,235,162.55

Total Personnel Services – Salaries \$5,235,162.55

200 Personnel Services – Employee Benefits

220 Social Security Contributions 384,857.07

230 PSERS Retirement Contributions 1,702,246.86

250 Unemployment Compensation 1,248.01

260 Workers' Compensation 84,920.71

270 Group Insurance – Self-Insurance 1,708,862.75

291 Other Retirement Plans 1,472.99

Total Personnel Services – Employee Benefits \$3,883,608.39

300 Purchased Professional and Technical Services

330 Other Professional Services 10,241.23

Total Purchased Professional and Technical Services \$10,241.23

400 Purchased Property Services

410 Cleaning Services 3,713.58

420 Utility Services 8,384.10

430 Repairs and Maintenance Services 78,548.27

440 Rentals 7,532.24

Total Purchased Property Services \$98,178.19

500 Other Purchased Services

511 Student Transportation Services from Another LEA Within the State 159,475.57

513 Contracted Carriers 7,362,315.90

516 Student Transportation Services From the IU 433,333.72

522 Automotive Liability Insurance 182,570.78

530 Communications 40,182.87

580 Travel 6,813.54

Total Other Purchased Services \$8,184,692.38

600 Supplies

610 General Supplies 368,614.73

620 Energy 406,859.66

630 Food 392.09

650 Supplies & Fees – Technology Related 127,351.32

Total Supplies \$903,217.80

800 Other Objects

810 Dues and Fees 397.20

Total Other Objects \$397.20

Total 2720 Vehicle Operation Services \$18,315,497.74

General Fund (10)

2750 Nonpublic Transportation

Elementary Secondary Federal Total

100 Personnel Services – Salaries				
100 Personnel Services – Salaries				519,733.65
Total Personnel Services – Salaries				\$519,733.65
200 Personnel Services – Employee Benefits				
220 Social Security Contributions				38,204.95
230 PSERS Retirement Contributions				169,070.50
250 Unemployment Compensation				122.61
260 Workers' Compensation				8,342.48
270 Group Insurance – Self-Insurance				168,413.92
291 Other Retirement Plans				226.99
Total Personnel Services – Employee Benefits				\$384,381.45
300 Purchased Professional and Technical Services				
330 Other Professional Services				1,000.52
Total Purchased Professional and Technical Services				\$1,000.52
400 Purchased Property Services				
410 Cleaning Services				362.80
420 Utility Services				819.08
430 Repairs and Maintenance Services				7,673.76
440 Rentals				735.86
Total Purchased Property Services				\$9,591.50
500 Other Purchased Services				
511 Student Transportation Services from Another LEA Within the State				15,579.94
513 Contracted Carriers				719,260.28
516 Student Transportation Services From the IU				42,334.47
522 Automotive Liability Insurance				17,836.22
530 Communications				3,925.66
580 Travel				665.65
Total Other Purchased Services				\$799,602.22
600 Supplies				
610 General Supplies				36,011.76
620 Energy				39,748.09
630 Food				38.31
650 Supplies & Fees – Technology Related				12,441.57
Total Supplies				\$88,239.73
800 Other Objects				
810 Dues and Fees				38.80
Total Other Objects				\$38.80
Total 2750 Nonpublic Transportation				\$1,802,587.87

General Fund (10)

	<u>Elementary</u>	<u>Secondary</u>	<u>Federal</u>	<u>Total</u>
2800 Support Services – Central				
100 Personnel Services – Salaries				
100 Personnel Services – Salaries			18,637.21	1,365,072.06
Total Personnel Services – Salaries			\$18,637.21	\$1,365,072.06
200 Personnel Services – Employee Benefits				
220 Social Security Contributions			1,388.16	97,051.73
230 PSERS Retirement Contributions			6,229.66	449,263.36
240 Tuition Reimbursement				28,026.00
250 Unemployment Compensation			2.04	132.72
260 Workers' Compensation			141.69	8,899.31
270 Group Insurance – Self-Insurance			4,858.29	258,633.79
291 Other Retirement Plans			226.61	12,943.73
Total Personnel Services – Employee Benefits			\$12,846.45	\$854,950.64
300 Purchased Professional and Technical Services				
330 Other Professional Services				127,615.45
340 Technical Services				198,856.57
350 Security / Safety Services				57,437.85
360 Employee Training and Development Services				28,742.50
Total Purchased Professional and Technical Services				\$412,652.37
400 Purchased Property Services				
430 Repairs and Maintenance Services				635,249.63
Total Purchased Property Services				\$635,249.63
500 Other Purchased Services				
530 Communications				536,354.18
549 Other Advertising/Public Relations				9,162.37
580 Travel				10,632.12
Total Other Purchased Services				\$556,148.67
600 Supplies				
610 General Supplies				132,116.60
630 Food				1,445.00
640 Books and Periodicals				2,498.71
650 Supplies & Fees – Technology Related				20,469.87
Total Supplies				\$156,530.18
800 Other Objects				
810 Dues and Fees				798.00
890 Miscellaneous Expenditures				1,274.62
Total Other Objects				\$2,072.62
Total 2800 Support Services – Central			\$31,483.66	\$3,982,676.17

General Fund (10)

2810 Planning, Research, Development and Evaluation Services	<u>Elementary</u>	<u>Secondary</u>	<u>Federal</u>	<u>Total</u>
100 Personnel Services – Salaries				
100 Personnel Services – Salaries				601,375.58
Total Personnel Services – Salaries				\$601,375.58
200 Personnel Services – Employee Benefits				
220 Social Security Contributions				44,488.08
230 PSERS Retirement Contributions				200,834.84
250 Unemployment Compensation				60.08
260 Workers' Compensation				4,016.43
270 Group Insurance – Self-Insurance				123,753.51
291 Other Retirement Plans				4,854.73
Total Personnel Services – Employee Benefits				\$378,007.67
300 Purchased Professional and Technical Services				
340 Technical Services				198,856.57
350 Security / Safety Services				57,437.85
Total Purchased Professional and Technical Services				\$256,294.42
400 Purchased Property Services				
430 Repairs and Maintenance Services				608,485.91
Total Purchased Property Services				\$608,485.91
500 Other Purchased Services				
530 Communications				536,354.18
580 Travel				2,578.68
Total Other Purchased Services				\$538,932.86
600 Supplies				
610 General Supplies				106,550.77
630 Food				627.44
650 Supplies & Fees – Technology Related				20,469.87
Total Supplies				\$127,648.08
800 Other Objects				
810 Dues and Fees				125.00
Total Other Objects				\$125.00
Total 2810 Planning, Research, Development and Evaluation Services				\$2,510,869.52

General Fund (10)

2820 Information Services

100 Personnel Services – Salaries

100 Personnel Services – Salaries 141,911.00

Total Personnel Services – Salaries \$141,911.00

200 Personnel Services – Employee Benefits

220 Social Security Contributions 10,116.36

230 PSERS Retirement Contributions 47,392.59

250 Unemployment Compensation 7.06

260 Workers' Compensation 472.51

270 Group Insurance – Self-Insurance 16,194.15

291 Other Retirement Plans 2,846.65

Total Personnel Services – Employee Benefits \$77,029.32

Total 2820 Information Services \$218,940.32

Elementary

Secondary

Federal

Total

General Fund (10)

2821 Supervision of Information Services

Elementary

Secondary

Federal

Total

100 Personnel Services – Salaries

100 Personnel Services – Salaries

141,911.00

Total Personnel Services – Salaries

\$141,911.00

200 Personnel Services – Employee Benefits

220 Social Security Contributions

10,116.36

230 PSERS Retirement Contributions

47,392.59

250 Unemployment Compensation

7.06

260 Workers' Compensation

472.51

270 Group Insurance – Self-Insurance

16,194.15

291 Other Retirement Plans

2,846.65

Total Personnel Services – Employee Benefits

\$77,029.32

Total 2821 Supervision of Information Services

\$218,940.32

LEA : 122092102 Central Bucks SD

Printed 11/4/2019 3:21:55 PM

Page - 49 of 56

General Fund (10)

2830 Staff Services

ElementarySecondaryFederalTotal100 Personnel Services – Salaries

100 Personnel Services – Salaries

603,148.27

Total Personnel Services – Salaries**\$603,148.27**200 Personnel Services – Employee Benefits

220 Social Security Contributions

41,059.13

230 PSERS Retirement Contributions

194,806.27

240 Tuition Reimbursement

28,026.00

250 Unemployment Compensation

63.54

260 Workers' Compensation

4,268.68

270 Group Insurance – Self-Insurance

113,827.84

291 Other Retirement Plans

5,015.74

Total Personnel Services – Employee Benefits**\$387,067.20**300 Purchased Professional and Technical Services

330 Other Professional Services

127,615.45

360 Employee Training and Development Services

28,742.50

Total Purchased Professional and Technical Services**\$156,357.95**400 Purchased Property Services

430 Repairs and Maintenance Services

26,763.72

Total Purchased Property Services**\$26,763.72**500 Other Purchased Services

549 Other Advertising/Public Relations

9,162.37

580 Travel

8,053.44

Total Other Purchased Services**\$17,215.81**600 Supplies

610 General Supplies

25,565.83

630 Food

817.56

640 Books and Periodicals

2,498.71

Total Supplies**\$28,882.10**800 Other Objects

810 Dues and Fees

673.00

890 Miscellaneous Expenditures

1,274.62

Total Other Objects**\$1,947.62****Total 2830 Staff Services****\$1,221,382.67**

General Fund (10)

2831 Supervision of Staff Services

Elementary

Secondary

Federal

Total

100 Personnel Services – Salaries

100 Personnel Services – Salaries

173,888.00

Total Personnel Services – Salaries

\$173,888.00

200 Personnel Services – Employee Benefits

220 Social Security Contributions

10,682.00

230 PSERS Retirement Contributions

58,071.06

250 Unemployment Compensation

7.06

260 Workers' Compensation

472.51

270 Group Insurance – Self-Insurance

16,194.15

291 Other Retirement Plans

3,484.98

Total Personnel Services – Employee Benefits

\$88,911.76

Total 2831 Supervision of Staff Services

\$262,799.76

General Fund (10)

2832 Recruitment and Placement Services

Elementary

Secondary

Federal

Total

100 Personnel Services – Salaries

100 Personnel Services – Salaries 429,260.27

Total Personnel Services – Salaries \$429,260.27

200 Personnel Services – Employee Benefits

220 Social Security Contributions 30,377.13

230 PSERS Retirement Contributions 136,735.21

250 Unemployment Compensation 56.48

260 Workers' Compensation 3,796.17

270 Group Insurance – Self-Insurance 97,633.69

291 Other Retirement Plans 1,530.76

Total Personnel Services – Employee Benefits \$270,129.44

300 Purchased Professional and Technical Services

330 Other Professional Services 127,615.45

Total Purchased Professional and Technical Services \$127,615.45

400 Purchased Property Services

430 Repairs and Maintenance Services 26,763.72

Total Purchased Property Services \$26,763.72

500 Other Purchased Services

549 Other Advertising/Public Relations 9,162.37

580 Travel 8,053.44

Total Other Purchased Services \$17,215.81

600 Supplies

610 General Supplies 25,565.83

630 Food 817.56

640 Books and Periodicals 2,498.71

Total Supplies \$28,882.10

800 Other Objects

810 Dues and Fees 673.00

890 Miscellaneous Expenditures 1,274.62

Total Other Objects \$1,947.62

Total 2832 Recruitment and Placement Services \$901,814.41

General Fund (10)

2834 Staff Development Services – Non-Instructional, Certified Staff Only

Elementary

Secondary

Federal

Total

200 Personnel Services – Employee Benefits

240 Tuition Reimbursement

28,026.00

Total Personnel Services – Employee Benefits

\$28,026.00

Total 2834 Staff Development Services – Non-Instructional, Certified Staff Only

\$28,026.00

General Fund (10)

2836 Staff Development Services – Non-Instructional, Non-Certified Staff Only

Elementary

Secondary

Federal

Total

300 Purchased Professional and Technical Services

360 Employee Training and Development Services

28,742.50

Total Purchased Professional and Technical Services

\$28,742.50

Total 2836 Staff Development Services – Non-Instructional, Non-Certified Staff Only

\$28,742.50

General Fund (10)

	<u>Elementary</u>	<u>Secondary</u>	<u>Federal</u>	<u>Total</u>
2850 State and Federal Agency Liaison Services				
100 Personnel Services – Salaries				
100 Personnel Services – Salaries			18,637.21	18,637.21
Total Personnel Services – Salaries			\$18,637.21	\$18,637.21
200 Personnel Services – Employee Benefits				
220 Social Security Contributions			1,388.16	1,388.16
230 PSERS Retirement Contributions			6,229.66	6,229.66
250 Unemployment Compensation			2.04	2.04
260 Workers' Compensation			141.69	141.69
270 Group Insurance – Self-Insurance			4,858.29	4,858.29
291 Other Retirement Plans			226.61	226.61
Total Personnel Services – Employee Benefits			\$12,846.45	\$12,846.45
Total 2850 State and Federal Agency Liaison Services			\$31,483.66	\$31,483.66

LEA : 122092102 Central Bucks SD

Printed 11/4/2019 3:21:55 PM

General Fund (10)

2900 Other Support Services

Elementary

Secondary

Federal

Total

500 Other Purchased Services

595 IU Payments By Withholding

137,812.61

596 Direct Payments To Intermediate Units

85,512.00

Total Other Purchased Services

\$223,324.61

Total 2900 Other Support Services

\$223,324.61

General Fund (10)

2910 Support Services Not Listed Elsewhere In the 2000 Series

Elementary

Secondary

Federal

Total

500 Other Purchased Services

595 IU Payments By Withholding

137,812.61

596 Direct Payments To Intermediate Units

85,512.00

Total Other Purchased Services

\$223,324.61

Total 2910 Support Services Not Listed Elsewhere In the 2000 Series

\$223,324.61

General Fund (10)

	<u>Total</u>
3000 Operation of Non-Instructional Services	
100 Personnel Services – Salaries	
100 Personnel Services – Salaries	4,892,987.01
Total Personnel Services – Salaries	\$4,892,987.01
200 Personnel Services – Employee Benefits	
220 Social Security Contributions	368,314.33
230 PSERS Retirement Contributions	1,462,663.11
250 Unemployment Compensation	1,421.50
260 Workers’ Compensation	90,280.87
270 Group Insurance – Self-Insurance	234,635.07
291 Other Retirement Plans	6,294.91
Total Personnel Services – Employee Benefits	\$2,163,609.79
300 Purchased Professional and Technical Services	
329 Professional Educational Services – Other	56,080.18
330 Other Professional Services	578,490.70
Total Purchased Professional and Technical Services	\$634,570.88
400 Purchased Property Services	
430 Repairs and Maintenance Services	2,718.14
Total Purchased Property Services	\$2,718.14
500 Other Purchased Services	
549 Other Advertising/Public Relations	950.00
580 Travel	49,122.36
599 Other Miscellaneous Purchased Services	726.75
Total Other Purchased Services	\$50,799.11
600 Supplies	
610 General Supplies	690,324.17
620 Energy	35,000.00
630 Food	61,434.62
Total Supplies	\$786,758.79
700 Property	
762 Capitalized Equipment - Replacement	5,040.00
Total Property	\$5,040.00
800 Other Objects	
810 Dues and Fees	26,670.00
Total Other Objects	\$26,670.00
Total 3000 Operation of Non-Instructional Services	\$8,563,153.72

General Fund (10)

3200 Student Activities

Elementary Secondary Federal Total

100 Personnel Services – Salaries				
100 Personnel Services – Salaries				2,721,846.27
Total Personnel Services – Salaries				\$2,721,846.27
200 Personnel Services – Employee Benefits				
220 Social Security Contributions				205,056.24
230 PSERS Retirement Contributions				883,532.17
250 Unemployment Compensation				359.17
260 Workers' Compensation				16,018.11
270 Group Insurance – Self-Insurance				101,752.24
291 Other Retirement Plans				4,913.08
Total Personnel Services – Employee Benefits				\$1,211,631.01
300 Purchased Professional and Technical Services				
330 Other Professional Services				558,099.70
Total Purchased Professional and Technical Services				\$558,099.70
500 Other Purchased Services				
580 Travel				30,740.76
Total Other Purchased Services				\$30,740.76
600 Supplies				
610 General Supplies				438,396.32
620 Energy				35,000.00
Total Supplies				\$473,396.32
700 Property				
762 Capitalized Equipment - Replacement				5,040.00
Total Property				\$5,040.00
800 Other Objects				
810 Dues and Fees				26,670.00
Total Other Objects				\$26,670.00
Total 3200 Student Activities				\$5,027,424.06

General Fund (10)

	<u>Elementary</u>	<u>Secondary</u>	<u>Federal</u>	<u>Total</u>
3300 Community Services				
100 Personnel Services – Salaries				
100 Personnel Services – Salaries				2,171,140.74
Total Personnel Services – Salaries				\$2,171,140.74
200 Personnel Services – Employee Benefits				
220 Social Security Contributions				163,258.09
230 PSERS Retirement Contributions				579,130.94
250 Unemployment Compensation				1,062.33
260 Workers' Compensation				74,262.76
270 Group Insurance – Self-Insurance				132,882.83
291 Other Retirement Plans				1,381.83
Total Personnel Services – Employee Benefits				\$951,978.78
300 Purchased Professional and Technical Services				
329 Professional Educational Services – Other				56,080.18
330 Other Professional Services				20,391.00
Total Purchased Professional and Technical Services				\$76,471.18
400 Purchased Property Services				
430 Repairs and Maintenance Services				2,718.14
Total Purchased Property Services				\$2,718.14
500 Other Purchased Services				
549 Other Advertising/Public Relations				950.00
580 Travel				18,381.60
599 Other Miscellaneous Purchased Services			726.75	726.75
Total Other Purchased Services			\$726.75	\$20,058.35
600 Supplies				
610 General Supplies			5,710.78	251,927.85
630 Food			979.25	61,434.62
Total Supplies			\$6,690.03	\$313,362.47
Total 3300 Community Services			\$7,416.78	\$3,535,729.66

General Fund (10)

5000 Other Expenditures and Financing Uses

Total

800 Other Objects

830 Interest	3,109,443.76
880 Refunds of Prior Years' Receipts	3,399.80

Total Other Objects	\$3,112,843.56
----------------------------	-----------------------

900 Other Uses of Funds

910 Redemption of Principal	9,915,000.00
939 Other Fund Transfers	39,685,180.00

Total Other Uses of Funds	\$49,600,180.00
----------------------------------	------------------------

Total 5000 Other Expenditures and Financing Uses	\$52,713,023.56
---	------------------------

General Fund (10)

5100 Debt Service / Other Expenditures and Financing Uses	<u>Elementary</u>	<u>Secondary</u>	<u>Federal</u>	<u>Total</u>
800 Other Objects				
830 Interest				3,109,443.76
880 Refunds of Prior Years' Receipts				3,399.80
Total Other Objects				\$3,112,843.56
900 Other Uses of Funds				
910 Redemption of Principal				9,915,000.00
Total Other Uses of Funds				\$9,915,000.00
Total 5100 Debt Service / Other Expenditures and Financing Uses				\$13,027,843.56

General Fund (10)

	<u>Elementary</u>	<u>Secondary</u>	<u>Federal</u>	<u>Total</u>
5110 Debt Service				
800 Other Objects				
830 Interest				3,109,443.76
Total Other Objects				\$3,109,443.76
900 Other Uses of Funds				
910 Redemption of Principal				9,915,000.00
Total Other Uses of Funds				\$9,915,000.00
Total 5110 Debt Service				\$13,024,443.76

General Fund (10)

	<u>Elementary</u>	<u>Secondary</u>	<u>Federal</u>	<u>Total</u>
5130 Refund of Prior Year Revenues / Receipts				
800 <u>Other Objects</u>				
880 Refunds of Prior Years' Receipts				3,399.80
Total Other Objects				\$3,399.80
Total 5130 Refund of Prior Year Revenues / Receipts				\$3,399.80

General Fund (10)

	<u>Elementary</u>	<u>Secondary</u>	<u>Federal</u>	<u>Total</u>
5200 Interfund Transfers – Out				
900 <u>Other Uses of Funds</u>				
939 Other Fund Transfers				39,685,180.00
Total Other Uses of Funds				\$39,685,180.00
Total 5200 Interfund Transfers – Out				\$39,685,180.00

General Fund (10)

5230 Capital Projects Fund Transfers

Elementary

Secondary

Federal

Total

900 Other Uses of Funds

939 Other Fund Transfers

29,996,119.00

Total Other Uses of Funds

\$29,996,119.00

Total 5230 Capital Projects Fund Transfers

\$29,996,119.00

General Fund (10)

5240 Debt Service Fund Transfers

Elementary

Secondary

Federal

Total

900 Other Uses of Funds

939 Other Fund Transfers

9,689,061.00

Total Other Uses of Funds

\$9,689,061.00

Total 5240 Debt Service Fund Transfers

\$9,689,061.00

Other Capital Projects Fund (39)

4000 Facilities Acquisition, Construction and Improvement Services

Total

400 Purchased Property Services

450 Construction Services

16,784,697.00

Total Purchased Property Services

\$16,784,697.00

Total 4000 Facilities Acquisition, Construction and Improvement Services

\$16,784,697.00

Other Capital Projects Fund (39)

4500 Building Acquisition and Construction Services – Original and Additional

Elementary

Secondary

Federal

Total

400 Purchased Property Services

450 Construction Services

7,454,490.00

7,454,490.00

Total Purchased Property Services

\$7,454,490.00

\$7,454,490.00

Total 4500 Building Acquisition and Construction Services – Original and Additional

\$7,454,490.00

\$7,454,490.00

LEA : 122092102 Central Bucks SD

Printed 11/4/2019 3:22:03 PM

Other Capital Projects Fund (39)

4600 Existing Building Improvement Services

Elementary

Secondary

Federal

Total

400 Purchased Property Services

450 Construction Services

9,330,207.00

9,330,207.00

Total Purchased Property Services

\$9,330,207.00

\$9,330,207.00

Total 4600 Existing Building Improvement Services

\$9,330,207.00

\$9,330,207.00

	<u>General Fund(10)</u>	<u>Public Purpose Trust(27)</u>	<u>Other Compt Approved (28)</u>	<u>Athletic / Activity(29)</u>	<u>Capital Reserve (690, 1850)(31)</u>
1000 Instruction					
1100 Regular Programs - Elementary / Secondary	143,984,200.24				
1200 Special Programs - Elementary / Secondary	45,075,780.47				
1300 Vocational Education	4,842,842.28				
1400 Other Instructional Programs - Elementary / Secondary	3,980,757.94				
1500 Nonpublic School Programs	35,365.44				
Total Instruction	\$197,918,946.37				
2000 Support Services					
2100 Support Services - Students	13,806,607.94				
2200 Support Services - Instructional Staff	12,308,836.03				
2300 Support Services - Administration	14,784,897.55				
2400 Support Services - Pupil Health	4,247,470.68				
2500 Support Services - Business	1,985,277.20				
2600 Operation and Maintenance of Plant Services	25,193,180.88				
2700 Student Transportation Services	20,253,796.16				
2800 Support Services - Central	3,982,676.17				
2900 Other Support Services	223,324.61				
Total Support Services	\$96,786,067.22				
3000 Operation of Non-Instructional Services					
3200 Student Activities	5,027,424.06				
3300 Community Services	3,535,729.66				
Total Operation of Non-Instructional Services	\$8,563,153.72				
4000 Facilities Acquisition, Construction and Improvement Services					
4500 Building Acquisition and Construction Services - Original and Additional					
4600 Existing Building Improvement Services					
Total Facilities Acquisition, Construction and Improvement					
5000 Other Expenditures and Financing Uses					
5100 Debt Service / Other Expenditures and Financing Uses	13,027,843.56				
5200 Interfund Transfers - Out	39,685,180.00				
Total Other Expenditures and Financing Uses	\$52,713,023.56				
TOTAL ACTUAL EXPENDITURES & OTHER FINANCING USES	\$355,981,190.87				

	<u>Capital Reserve (1431)(32)</u>	<u>Other Capital Projects Fund(39)</u>	<u>Debt Service(40)</u>	<u>Permanent(90)</u>	<u>Total</u>
1000 Instruction					
1100 Regular Programs - Elementary / Secondary					143,984,200.24
1200 Special Programs - Elementary / Secondary					45,075,780.47
1300 Vocational Education					4,842,842.28
1400 Other Instructional Programs - Elementary / Secondary					3,980,757.94
1500 Nonpublic School Programs					35,365.44
Total Instruction					\$197,918,946.37
2000 Support Services					
2100 Support Services - Students					13,806,607.94
2200 Support Services - Instructional Staff					12,308,836.03
2300 Support Services - Administration					14,784,897.55
2400 Support Services - Pupil Health					4,247,470.68
2500 Support Services - Business					1,985,277.20
2600 Operation and Maintenance of Plant Services					25,193,180.88
2700 Student Transportation Services					20,253,796.16
2800 Support Services - Central					3,982,676.17
2900 Other Support Services					223,324.61
Total Support Services					\$96,786,067.22
3000 Operation of Non-Instructional Services					
3200 Student Activities					5,027,424.06
3300 Community Services					3,535,729.66
Total Operation of Non-Instructional Services					\$8,563,153.72
4000 Facilities Acquisition, Construction and Improvement Services					
4500 Building Acquisition and Construction Services - Original and Additional		7,454,490.00			7,454,490.00
4600 Existing Building Improvement Services		9,330,207.00			9,330,207.00
Total Facilities Acquisition, Construction and Improvement		\$16,784,697.00			\$16,784,697.00
5000 Other Expenditures and Financing Uses					
5100 Debt Service / Other Expenditures and Financing Uses					13,027,843.56
5200 Interfund Transfers - Out					39,685,180.00
Total Other Expenditures and Financing Uses					\$52,713,023.56
TOTAL ACTUAL EXPENDITURES & OTHER FINANCING USES		\$16,784,697.00			\$372,765,887.87

PSERS Salary Data (Salary Data should relate to the General Fund only)

Amount Description	Amount
Total Salary Base for salaries subject to PSERS withholding	161,127,436.85
Total Federally Funded salaries subject to PSERS withholding	2,353,484.86
	<hr/>

Title I Expenditure Data

Amount Description	Amount
Expenditures Funded with Current Title I Funds	718,324.47
Expenditures Funded with Carry over Title I Funds	
	<hr/>
Total Title I Expenditure Data	\$718,324.47
	<hr/>

Benefits for Staff Relative to Collective Bargaining Agreements

	OBJECT	COVERED	NOT COVERED	TOTAL
10 General Fund				
	211 Medical Insurance			
	212 Dental Insurance			
	215 Eye Care Insurance			
	216 Prescription Insurance			
	271 Self-Insurance Medical Benefits	20,750,186.67	1,092,115.09	21,842,301.76
	272 Self-Insurance Dental Benefits	1,258,443.54	66,233.87	1,324,677.41
	275 Self-Insurance Eye Care Benefits			
	276 Self-Insurance Prescription Benefits	6,759,261.48	355,750.60	7,115,012.08
	FUND TOTAL	\$28,767,891.69	\$1,514,099.56	\$30,281,991.25
50 Enterprise Fund	No Self Insurance data to report			
	211 Medical Insurance			
	212 Dental Insurance			
	215 Eye Care Insurance			
	216 Prescription Insurance			
	271 Self-Insurance Medical Benefits			
	272 Self-Insurance Dental Benefits			
	275 Self-Insurance Eye Care Benefits			
	276 Self-Insurance Prescription Benefits			
	FUND TOTAL			
60 Internal Service Fund	No Self Insurance data to report			
	211 Medical Insurance			
	212 Dental Insurance			
	215 Eye Care Insurance			
	216 Prescription Insurance			
	271 Self-Insurance Medical Benefits			
	272 Self-Insurance Dental Benefits			
	275 Self-Insurance Eye Care Benefits			
	276 Self-Insurance Prescription Benefits			
	FUND TOTAL			
Total of All Funds		\$28,767,891.69	\$1,514,099.56	\$30,281,991.25

LEA : 122092102 Central Bucks SD

Printed 11/4/2019 3:22:32 PM

Function	Special Education (Prior Year)	Nonspecial Education (Prior Year)	Total (Prior Year)	Special Education (Current Year)	Nonspecial Education (Current Year)	Total (Current Year)
2120 Guidance Services	2,673,900.46	4,858,213.51	7,532,113.97	2,788,257.32	5,065,988.66	7,854,245.98
2140 Psychological Services	1,880,926.17	208,991.80	2,089,917.97	1,952,103.82	216,900.42	2,169,004.24
2150 Speech Pathology and Audiology Services	1,988,906.74	220,989.64	2,209,896.38	2,187,718.55	243,079.84	2,430,798.39
2160 Social Work Services						
2260 Instruction and Curriculum Development Services	122,236.08	2,324,015.98	2,446,252.06	126,770.89	2,408,646.87	2,535,417.76
2350 Legal and Accounting Services	75,147.38	74,454.96	149,602.34	103,814.31	70,227.68	174,041.99
2420 Medical Services						
2440 Nursing Services				1,465,904.14	2,663,403.31	4,129,307.45
2700 Student Transportation Services	1,797,963.24	17,127,965.55	18,925,928.79	1,924,110.64	18,329,685.52	20,253,796.16
Total	\$8,539,080.07	\$24,814,631.44	\$33,353,711.51	\$10,548,679.67	\$28,997,932.30	\$39,546,611.97

LEA : 122092102 Central Bucks SD

Printed 11/4/2019 3:22:34 PM

(PRINCIPAL AMOUNTS ONLY)

GOVERNMENTAL FUNDS/ ACTIVITIES

	Short-Term Borrowing	General Obligation Bonds/Notes	Authority Building Obligations	Other Long-Term Debt	Other Post-Employment Benefits (OPEB)	Compensated Absences	Net Pension Liability	Total
1. Debt at Beginning of Fiscal Year		64,415,000.00			72,021,883.00	1,972,913.00	559,719,000.00	698,128,796.00
2. Additional Debt Incurred During Year					3,569,374.00	206,027.00		3,775,401.00
3. Retirements and Repayments		9,915,000.00					5,790,000.00	15,705,000.00
4. Debt at End of Fiscal Year		54,500,000.00			75,591,257.00	2,178,940.00	553,929,000.00	686,199,197.00
5. Accreted Interest at End Of Fiscal Year								
6. Total Debt and Accreted Interest		54,500,000.00			75,591,257.00	2,178,940.00	553,929,000.00	686,199,197.00
7. Current Portion P&I - Due within 1 year		10,084,000.00						10,084,000.00
8. Interest Paid during current fiscal year		3,109,444.00						3,109,444.00

(PRINCIPAL AMOUNTS ONLY)

PROPRIETARY FUNDS

- 1. Debt at Beginning of Fiscal Year
- 2. Additional Debt Incurred During Year
- 3. Retirements and Repayments
- 4. Debt at End of Fiscal Year
- 5. Accreted Interest at End Of Fiscal Year
- 6. Total Debt and Accreted Interest
- 7. Current Portion P&I - Due within 1 year
- 8. Interest Paid during current fiscal year

Total Principal and Interest Payments Made by Your School - All Funds

Function	Fund		Principal (910)	Principal (920)	Interest (830)	Total (Principal +Interest)	Misc Other Uses (990)
5110	10	General Fund	9,915,000.00		3,109,443.76	13,024,443.76	
5110	20	Special Revenue Funds					
5110	30	Capital Projects Funds					
5110	40	Debt Service Fund					
5110	90	Permanent Fund					
5120	10	General Fund					
5120	20	Special Revenue Funds					
5120	30	Capital Projects Funds					
5120	40	Debt Service Fund					

Total Debt Payments - Governmental Funds			\$9,915,000.00		\$3,109,443.76	\$13,024,443.76	
---	--	--	-----------------------	--	-----------------------	------------------------	--

Function	Fund		Principal (910)	Principal (920)	Interest (830)	Total (Principal +Interest)
5110	50	Enterprise Fund				
5110	60	Internal Service Fund				
5120	50	Enterprise Fund				
5120	60	Internal Service Fund				

Total Debt Payments - Proprietary Funds						
--	--	--	--	--	--	--

Debt Details
Governmental Funds/ Activities

Debt Category	Debt Issue Date (MM/YYYY)	Principal Amounts Only			Debt at End of Fiscal Year	Current Portion Due Within One Year (Principal and Interest)	Interest Paid During Fiscal Year
		Debt at Beginning of Fiscal Year	Additions	Reductions / Repayments			
General Obligation Bonds/Notes – CIB	04/2011	800,000.00			800,000.00	800,000.00	37,550.00
General Obligation Bonds/Notes – CIB	04/2011	45,805,000.00		2,325,000.00	43,480,000.00	2,273,000.00	2,181,394.00
General Obligation Bonds/Notes – CIB	02/2007	17,810,000.00		7,590,000.00	10,220,000.00	7,011,000.00	890,500.00
Compensated Absences		1,972,913.00	206,027.00		2,178,940.00		
Other Post-Employment Benefits (OPEB)		72,021,883.00	3,569,374.00		75,591,257.00		
Net Pension Liability		559,719,000.00		5,790,000.00	553,929,000.00		
Totals for Debt Entered:		\$698,128,796.00	\$3,775,401.00	\$15,705,000.00	\$686,199,197.00	\$10,084,000.00	\$3,109,444.00

General Fund (10)

Section 1: Tuition/Purchased Services as Reported within Expenditure Detail

	Amount
Tuition Reported in General Fund Expenditures 1000-560	10,192,578.17
Purchased Services in General Fund Expenditures 1000-594 and 1000-597	2,754.72
Section 1 Total	\$10,195,332.89

Section 2: Tuition Paid to Institution Types During Fiscal Year

	Tuition Paid For Nonspecial Education	Tuition Paid For Special Education	Total
1 1306 Institutions	370.25	98,875.44	99,245.69
2 Institutionalized Children's Programs		2,754.72	2,754.72
3 Juveniles Incarcerated in Adult Facilities	41,341.15	130,913.61	172,254.76
4 Residential Treatment Facilities	30,379.00	182,335.22	212,714.22
5 Other Local Education Agencies	14,161.69	177,912.25	192,073.94
6 Brick and Mortar Charter Schools			
7 Cyber Charter Schools	1,191,525.86	616,923.15	1,808,449.01
8 Career and Technology Centers	2,663,563.25	2,179,279.03	4,842,842.28
9 Approved Private Schools		397,655.62	397,655.62
10 PA Chartered Schools for the Deaf and Blind			
11 Private Residential Rehabilitative Institutions		0.91	0.91
12 Juvenile Detention Centers	44,323.84	63,858.48	108,182.32
13 Special Program Jointures			
14 Other Tuition Not Included Elsewhere In This Section	195,114.00	2,164,045.42	2,359,159.42
Section 2 Total	\$4,180,779.04	\$6,014,553.85	\$10,195,332.89

1 .	<u>Student Transportation Services for Educational Field Trips</u>	285,348.77
2 .	<u>Student Transportation Services for Student Activities</u>	160,583.46
3 .	<u>Rental of Vehicles for Student Transportation Services</u>	5,865.00
4 .	<u>Capital Reserve Funds</u>	284,362.04

Include only district-owned transportation expenditures paid from State or local money.
 DO NOT include federal expenditures or payments to contract service providers.
 Contracted transportation services should not be recorded on this schedule.

LEA : 122092102 Central Bucks SD

Printed 11/4/2019 3:22:47 PM

Food Service / Cafeteria Operations Fund (51)

3000 Operation of Non-Instructional Services

Total

300 Purchased Professional and Technical Services

329 Professional Educational Services – Other	23,264.55
340 Technical Services	1,700.00

Total Purchased Professional and Technical Services	\$24,964.55
--	--------------------

400 Purchased Property Services

430 Repairs and Maintenance Services	325,332.00
--------------------------------------	------------

Total Purchased Property Services	\$325,332.00
--	---------------------

500 Other Purchased Services

570 Food Service Management	4,213,135.71
-----------------------------	--------------

Total Other Purchased Services	\$4,213,135.71
---------------------------------------	-----------------------

600 Supplies

610 General Supplies	26,647.00
----------------------	-----------

Total Supplies	\$26,647.00
-----------------------	--------------------

800 Other Objects

810 Dues and Fees	23,175.81
890 Miscellaneous Expenditures	20,404.26

Total Other Objects	\$43,580.07
----------------------------	--------------------

Total 3000 Operation of Non-Instructional Services	\$4,633,659.33
---	-----------------------

Food Service / Cafeteria Operations Fund (51)

	<u>Elementary</u>	<u>Secondary</u>	<u>Federal</u>	<u>Total</u>
3100 Food Services				
300 <u>Purchased Professional and Technical Services</u>				
329 Professional Educational Services – Other				23,264.55
340 Technical Services				1,700.00
Total Purchased Professional and Technical Services				\$24,964.55
400 <u>Purchased Property Services</u>				
430 Repairs and Maintenance Services				325,332.00
Total Purchased Property Services				\$325,332.00
500 <u>Other Purchased Services</u>				
570 Food Service Management				4,213,135.71
Total Other Purchased Services				\$4,213,135.71
600 <u>Supplies</u>				
610 General Supplies				26,647.00
Total Supplies				\$26,647.00
800 <u>Other Objects</u>				
810 Dues and Fees				23,175.81
890 Miscellaneous Expenditures				20,404.26
Total Other Objects				\$43,580.07
Total 3100 Food Services				\$4,633,659.33

	<u>Food Service(51)</u>	<u>Child Care Operations(52)</u>	<u>Other Enterprise(58)</u>	<u>Internal Service(60)</u>	<u>Total</u>
3000 <u>Operation of Non-Instructional Services</u>					
3100 Food Services	4,633,659.33				4,633,659.33
Total Operation of Non-Instructional Services	\$4,633,659.33				\$4,633,659.33
TOTAL ACTUAL EXPENDITURES & OTHER FINANCING USES	\$4,633,659.33				\$4,633,659.33

LEA : 122092102 Central Bucks SD

Printed 11/4/2019 3:23:03 PM

Fund	School	School Number	Local Personnel	Local Nonpersonnel	State Personnel	State Nonpersonnel	Federal Personnel	Federal Nonpersonnel	Total	Explanation
10	Barclay El Sch	4683	6,197,407.00	751,449.00	1,644,577.00	199,409.00	358,613.00	15,958.00	9,167,413.00	
	Bridge Valley El Sch	7796	7,733,334.00	966,137.00	2,052,159.00	256,379.00	23,081.00	15,523.00	11,046,613.00	
	Buckingham El Sch	1044	5,261,817.00	579,157.00	1,396,304.00	153,688.00	14,576.00	9,803.00	7,415,345.00	
	Butler El Sch	1081	8,993,562.00	1,067,168.00	2,386,580.00	283,189.00	27,286.00	18,351.00	12,776,136.00	
	Central Bucks HS-East	5133	17,827,263.00	2,088,106.00	4,730,739.00	554,111.00	37,069.00	31,768.00	25,269,056.00	
	Central Bucks HS-South	7790	19,174,681.00	2,386,939.00	5,088,297.00	633,411.00	40,493.00	34,703.00	27,358,524.00	
	Central Bucks HS-West	1043	16,242,682.00	2,099,711.00	4,310,246.00	557,191.00	34,935.00	29,939.00	23,274,704.00	
	Cold Spring El Sch	7435	6,171,908.00	665,262.00	1,637,811.00	176,537.00	16,315.00	10,972.00	8,678,805.00	
	Doyle El Sch	4852	5,553,353.00	587,444.00	1,473,668.00	155,887.00	127,448.00	10,249.00	7,908,049.00	
	Gayman El Sch	1048	4,886,628.00	525,450.00	1,296,742.00	139,436.00	13,185.00	8,867.00	6,870,308.00	
	Groveland El Sch	7653	9,308,734.00	1,097,629.00	2,470,216.00	291,273.00	403,866.00	64,812.00	13,636,530.00	
	Holicong MS	5307	11,376,751.00	1,312,220.00	3,018,996.00	348,218.00	25,010.00	21,434.00	16,102,629.00	
	Jamison El Sch	7520	6,065,831.00	670,846.00	1,609,662.00	178,019.00	16,852.00	11,334.00	8,552,544.00	
	Kutz El Sch	1047	6,073,807.00	694,601.00	1,611,778.00	184,323.00	17,169.00	11,546.00	8,593,224.00	
	Lenape MS	1041	10,047,948.00	1,214,453.00	2,666,378.00	322,274.00	22,678.00	19,435.00	14,293,166.00	
	Linden El Sch	1057	4,927,082.00	537,282.00	1,307,477.00	142,576.00	13,122.00	8,824.00	6,936,363.00	
	Mill Creek El Sch	7654	8,421,349.00	985,714.00	2,234,735.00	261,574.00	24,125.00	16,224.00	11,943,721.00	
	Pine Run El Sch	5306	5,222,584.00	573,498.00	1,385,893.00	152,187.00	13,944.00	9,377.00	7,357,483.00	
	Tamanend MS	1042	9,422,959.00	1,108,353.00	2,500,527.00	294,119.00	20,916.00	17,925.00	13,364,799.00	
	Titus El Sch	1131	6,782,479.00	786,991.00	1,799,835.00	208,840.00	38,368.00	14,544.00	9,631,057.00	
	Tohickon MS	7715	10,786,995.00	1,353,782.00	2,862,495.00	359,247.00	22,827.00	19,563.00	15,404,909.00	
	Unami MS	4678	9,861,492.00	1,163,723.00	2,616,899.00	308,812.00	22,008.00	18,861.00	13,991,795.00	
	Warwick El Sch	1132	5,887,554.00	686,105.00	1,562,353.00	182,069.00	87,957.00	13,843.00	8,419,881.00	
Total			202,228,200.00	23,902,020.00	53,664,367.00	6,342,769.00	1,421,843.00	433,855.00	287,993,054.00	

LEA : 122092102 Central Bucks SD

Printed 11/4/2019 3:23:06 PM

	<u>Nonspecial Education</u>	<u>Special Education</u>
1000 Instruction		
1110 Regular Programs	55,811	176,736
Total Instruction	\$55,811	\$176,736
2000 Support Services		
2270 Instructional Staff Professional Development Services	4	13
2836 Staff Development Services - Non-Instructional, Non-Certified Staff Only	5	15
Total Support Services	\$9	\$28
TOTAL EXPENDITURES	\$55,820	\$176,764

	<u>Nonspecial Education</u>	<u>Special Education</u>
1000 Instruction		
1100 <u>Regular Programs - Elementary / Secondary</u>		
100 Personnel Services - Salaries	\$31,365	\$99,323
220 Social Security Contributions	\$2,291	\$7,254
230 PSERS Retirement Contributions	\$10,493	\$33,229
260 Workers' Compensation	\$470	\$1,490
270 Group Insurance - Self-Insurance	\$7,889	\$24,983
291 Other Retirement Plans	\$277	\$876
323 Professional Educational Services - Other Educational Agencies	\$390	\$1,234
340 Technical Services	\$363	\$1,148
430 Repairs and Maintenance Services	\$37	\$118
440 Rentals	\$2	\$5
530 Communications	\$16	\$51
580 Travel	\$64	\$203
610 General Supplies	\$7	\$23
890 Miscellaneous Expenditures	\$2,147	\$6,799
Total Regular Programs - Elementary / Secondary	\$55,811	\$176,736
Total Instruction	\$55,811	\$176,736
2000 Support Services		
2200 <u>Support Services - Instructional Staff</u>		
580 Travel	\$4	\$13
Total Support Services - Instructional Staff	\$4	\$13
2800 <u>Support Services - Central</u>		
580 Travel	\$5	\$15
Total Support Services - Central	\$5	\$15
Total Support Services	\$9	\$28
TOTAL EXPENDITURES	\$55,820	\$176,764

<u>Nonspecial Education</u>	<u>Special Education</u>
-----------------------------	--------------------------

7000 Revenue from State Sources

Total Revenue from State Sources	\$6,352	\$20,281
Total	\$6,352	\$20,281
TOTAL REVENUES	\$6,352	\$20,281

LEA : 122092102 Central Bucks SD

Printed 11/4/2019 3:23:13 PM

	<u>Nonspecial Education</u>	<u>Special Education</u>
7000 Revenue from State Sources		
7810 State Share of Social Security and Medicare Taxes	1,138	3,634
7820 State Share of Retirement Contributions	5,214	16,647
Total Revenue from State Sources	\$6,352	\$20,281
TOTAL	\$6,352	\$20,281
TOTAL REVENUES	\$6,352	\$20,281